

en 2024

***IceToolz***<sup>®</sup>

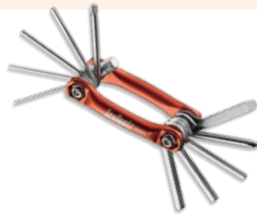
# IceToolz®



**06-15** Xpert Series



**20-21** Hex and Star (Torx®) Wrenches



**22-23** Multi Tools



**24-25** Display & Storage



**30-33** Cleaning & Lubrication



**29** Safety



**37** Tool Kits



**38-39** Air Pumps

## Contents

01	What's New	28	Cone Wrenches
02	e-Bike	29	Safety
03	Cable Tools	29	Headset Wrenches
04-05	Tire Service	30-33	Cleaning & Lubrication
06-15	Xpert Series - Tools for Specialists	34	Pedal and Axle Wrenches
16-17	Freewheel & Cassette Tools	34-35	Disc Brake Tools
17-19	Spoke Tools	36	Bottom Bracket Tools
19-20	Crank Tools	37	Tool Kits
20-21	Hex and Star (Torx®) Wrenches	38-39	Air Pumps
22-23	Multi Tools	40-42	General Tools
24-25	Display & Storage	43-44	Frame & Fork Tools
26-27	Chain Tools	44	Accessories

Third party brand / product names used herein are used to identify such products and are for descriptive purposes only. Such names may be marks and / or registered marks of their respective owners.

Online Video





# 2024 What's New



**67R3** >>Page 3



**M030** >>Page 36



**M045** >>Page 36



**11T1** >>Page 36



**A810** >>Page 39



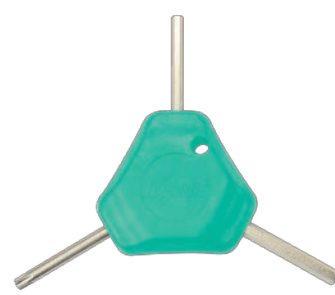
**A812F** >>Page 39



**70A1** >>Page 20



**70B1** >>Page 20



**70C1** >>Page 20



### E633 SuperLifter-III Repair Stand

- E-bike compatible up to 60kg
- Rotatable rubber clamp for Ø25.4mm ~ Ø55mm
- Adjustable height from 50cm to 180cm (19.7"~70.8")
- 1 turn on the handle = 10cm in height
- Integrated wheels for better indoor and outdoor maneuver
- Large base to support the bike firmly to the top
- Includes integrated work tray
- Patented



**E633S Spare Arm Set for #E139, #E631 & #E633 SuperLifters**



**E633Q Metal quick release lever for #E631 and #E633 clamps**

### C137



### C137 E-Bike Drivetrain Cleaner

- Quickly eliminate built up oil, grease and grime
- 14oz. / 425ml

### C147



### C147 Chain Lubricant (for e-Bike)

- Engineered specially for e-Bike chains to withstand high temperature and maintains viscosity during usage
- High cooling capacity and electric insulator
- 4oz. / 120ml

### C177 e-Bike Grease

- Ideally for the circuit and parts of motors in various electric bike
- Non-conductive
- Protects metal against corrosion, heat, and water
- Highly lubricating even with small amount
- Temperature range: -25°C ~ 200°C
- 5ml



### E631P Replacement Rubber Pads for #E631 & #E633



### E631W Replacement wire fore #E139, #E631 & #E633 SuperLifters



### M582 Shimano® Chaining Mounting Tool

- Compatible for Shimano® SM-CRE80 (STePS) and FSA Spider
- Use with 1/2" Two-way Ratchet Wrench (#53R4)

### M583 Shimano® Chaining Mounting Tool

- Compatible for Shimano® SM-CRE60 (STePS)
- Use with 1/2" Two-way Ratchet Wrench (#53R4)

### M801 BOSCH® Lockring Tool

- Compatible for Bosch® Active / Performance Line till 2019
- Use with 1/2" Two-way Ratchet Wrench (#53R4)

### M803 Lockring Tool for Bosch® and YAMAHA®

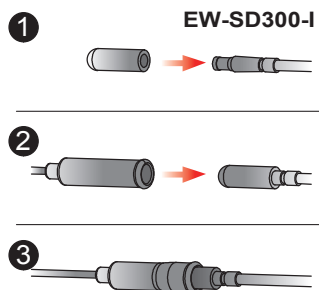
- Compatible for Bosch® Gen. 3/4 and Yamaha® PW-X drives
- Use with 1/2" Two-way Ratchet Wrench (#53R4)



### 01A1 Cable Plier

- With a thumb lock to hold the cable tight for one hand operation
- Soften coated on handle for comfortable holding
- Suitable for shop, home or professional user

### 67R2

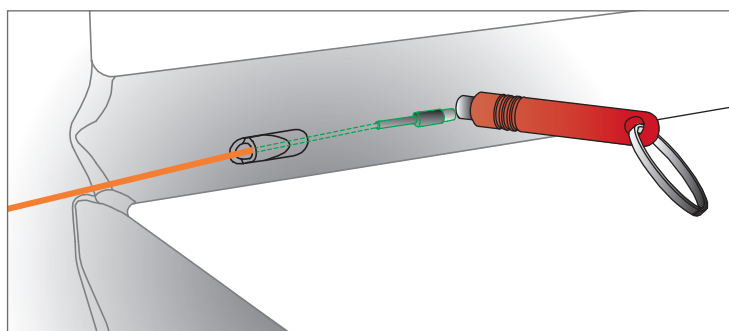


### 67R2 Adapter for Di2 EW-SD300-I Wire, for Use with #67R1

### 67R3 Internal Routing Tool

- Easy installation for cables, wires and Di2 inside of bike frame
- Plastic coated on wire of stainless steel up to length 250mm with magnet in the end
- Suitable for carbon fiber, titanium and aluminum frames
- One cable with opposite polarity magnet to seek or attach inside frame
- Suitable for hole diameter larger than 6mm
- Suitable for Di2 EW-SD50-I & EW-SD300-I wires

### 67R3



### 67A5 Pro Shop Cable & Spoke Cutter

- For Shimano® SIS SP
- Contains inner wire (Max. Ø3.5mm) and outer casing (Max. Ø7.0mm) reconitioner
- Patented



### 67B4 Cable Cutter

- Cuts cable, housing and wire quickly and easily
- Thumb-lock closure is easy to open and protects cutter when closed



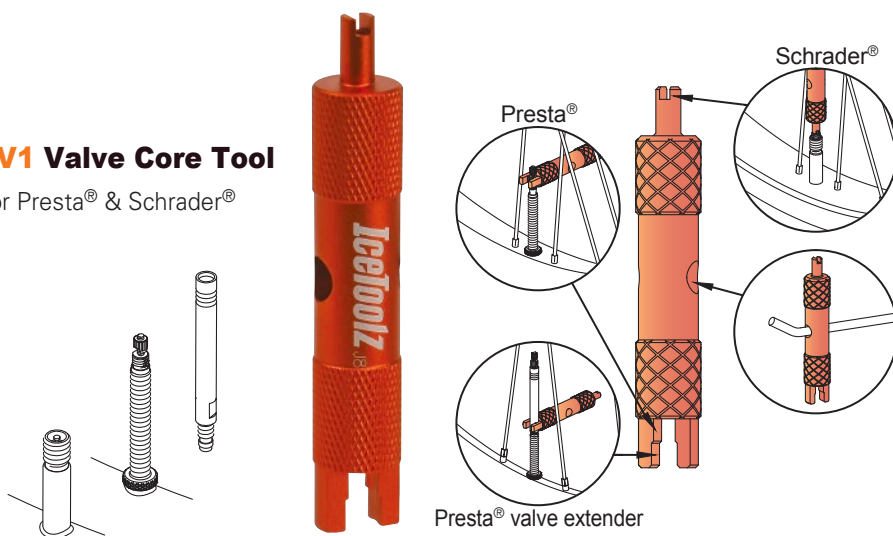
### 64P3 POM Tire Levers

- Set of 3 pieces
- Unique V shaped design can be easily fixed on the spokes
- Air vent function added on back
- Smart V shaped design on back is a fulcrum on the rim for tire removal
- Patented



### 66V1 Valve Core Tool

- For Presta® & Schrader®



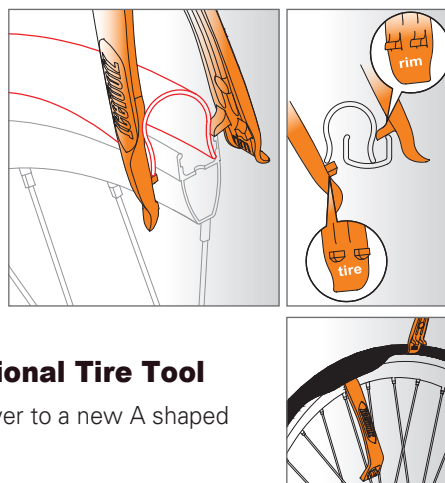
### 1903 Steel Tire Lever Set

- Zinc plated
- Set of 3 pieces



### 64A2 Clamp-Type, Duo-functional Tire Tool

- Transformable from a traditional tire lever to a new A shaped design for easier tire mounting



### 64D3 Screwdriver Type Downhill Tire Lever

- Works for most stubborn bicycle tires
- Metal parts covered by durable nylon to provide extra protection for Alu & Carbon Fiber rims



### 64H2 Heavy Duty Steel Tire Lever

- Forged, zinc plated
- 200mmL



### 65A1 Tire Puncture Repair Kit

- 18 patches
- 3 tire levers
- 10ml adhesive
- 8cm valve hose
- A sandpaper
- Supplied in a tin box



### 65B1 Tire Puncture Repair Kit

- 125ml adhesive with brush
- 3 sandpapers (85x45mm)
- 30 patches (Ø42mm)



### 65C1 Puncture Repair Kit for Tubeless Tire



### 66F1 Tire Sealant

- For all inflatable rubber tubes and tubeless tires
- Contains 120ml and one small piece of valve tool for Schrader® and Dunlop® valves
- Applicable for tire pressure under 60 PSI
- Suggest replenishing after half year
- One bottle fills 2 tires



### 56P6 Glueless Patch Set AirDam

- Six patches per set



### 56E6 Glueless Patch Set AirDam

- Six patches per set



### 56J5 Glueless Patch Set AirDam Set AirDam

- 50 sets #56P6 in jar



### 66L1 Bead Lubricant

- Bead Lubricant for tubeless tire, 100ml
- Quickens the process of sliding tire into the rim
- Avoids hassle cleaning the tire, the lube dries automatically
- A water base solution prevents damage to the tire



### 56H1 Glueless Patch Set AirDam

- 10 sets #56E6 per card

### 56H2 Glueless Patch Set AirDam

- 20 sets #56E6 per card



### 66G1 10ml Adhesive

- 50 tubes in jar



### E129 Truing Stand

- Single-arm design, fits 18" ~ 29" rim
- Increased stability by heavy base design
- E127T kit for thru-axle hubs
- Scales to 0.2mm
- Patented



### E129T

- #E129 Truing Stand with #E127T Through-Axle Adaptor
- Scales to 0.2mm

### E129W Washer For #E129, #E129T and #E129V

- For 100mm front hub
- Outer rim up to 32mm



### E129V

- #E129 Truing Stand with Dial Gauge and Thru-Axle Adaptor
- Scales to 0.01mm



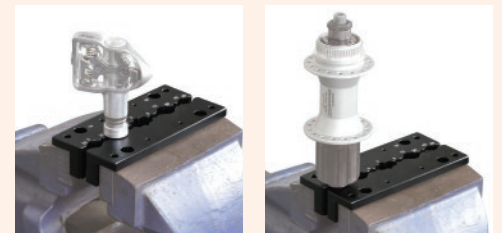
### E127T Through-Axle Adaptor

- Use with #E127, #E128, #E129 Truing Stand
- Conical design use with shaft diameter 11mm ~ 20mm
- Suitable for hub width 100 ~ 150mm

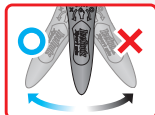


### E122 Axle Vise

- Hold a variety of axles
- Prevent turning when making adjustments to the wheel's hub
- Magnets to hold jaws solid in place
- Suitable for  $\varnothing$ 5/9/10/12/14/20/25/30/36mm axles



Innovation Award



### E219 Ocarina Torque Wrench Set

- Operating Range: 3 ~ 10N·m
- Its lightweight and smart design is ideal for all mechanics and riders
- Tightens to the correct torque easily, no need to set up the tool between various torque
- The ergonomic handle holds 3/4/5/6mm hex keys and T-25 in one tool
- Contents: 3/4/5/6mm hex keys and T-25
- Patented







### E211 One-way Torque Wrench

- Operating Range: 21 ~ 105N·m
- For 3/8" & 1/2" drive sockets
- Supplied in a case



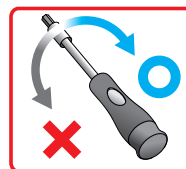
### E212 One-way Torque Wrench

- Operating Range: 5 ~ 25N·m
- For 1/4" & 3/8" drive sockets
- Supplied in a case



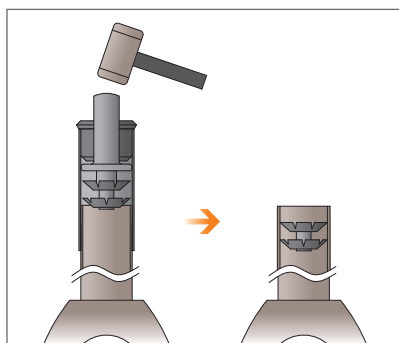
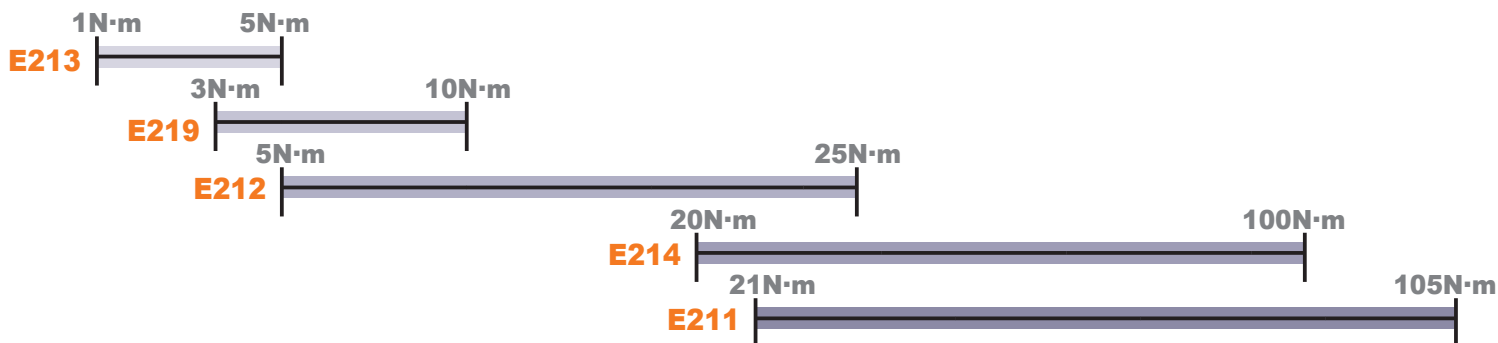
### E214 Two-way Torque Wrench

- Operating Range: 20 ~ 100N·m
- For 3/8" & 1/2" drive sockets
- Supplied in a case



### E213 One-way Torque Screwdriver

- Operating Range: 1 ~ 5N·m
- Contains bits of Hex, Pozi®, Phillip, Slot, Torx® (totally 32 bits)
- Contains a 1/4" adaptor
- For 1/4" drive sockets
- Supplied in a case



### E114 Star Nut Installation Tool

- For 1", 1-1/8", and 1-1/2" fork steerer
- Patented





Tools are optional

Steel base  
#E132B  
is optional**E132 Floor Repair Stand**

- Single clamp
- Includes tool tray #E132T
- The steel plate #E132B is optional

**E132B Steel Plate**

- Steel plate for #E132 Floor Repair Stand
- 600 x 600 x 8mm



Tools are optional

Steel base  
#E134B  
is optional**E134 Floor Repair Stand**

- Dual clamp
- Includes tool tray #E132T
- The steel plate #E134B is optional

**E134B Steel Plate**

- Steel plate for #E134 Floor Repair Stand
- 900 x 600 x 8mm

**E136 Floor Repair Stand**

- Dual clamp with metallic paw
- Includes tool tray #E132T
- The steel plate #E134B is optional

**► E136S Spare Arm Set for #E132, #E134 & #E136 Floor Repair Stands****E633 SuperLifter-III Repair Stand**

- E-bike compatible up to 60kg
- Rotatable rubber clamp for Ø25.4mm ~ Ø55mm
- Adjustable height from 50cm to 180cm (19.7"~70.8")
- 1 turn on the handle = 10cm in height
- Integrated wheels for better indoor and outdoor maneuver
- Large base to support the bike firmly to the top
- Includes integrated work tray
- Patented

**E633S Spare Arm Set for #E139, #E631 & #E633 SuperLifters****E633Q Metal quick release lever for #E631 and #E633 clamps****E631P Replacement Rubber Pads for #E631 & #E633****E631W Replacement wire fore for #E139, #E631 & #E633 SuperLifters**



### E137 Professional Repair Stand

- Rotatable clamping mechanism holds Ø25.4 ~ 55mm tubes
- Quick release for easy adjustment
- Fold for better mobility
- 3-leg stands stable and portable
- Contains paper towel holder
- Tool tray (#E132T) and tools are optional

Tool tray and tools are optional



### E137C Spare Clamp

- For #E132, #E134, #E136, #E137, #E138, #E139 Repair Stands



### E137S Spare Arm Set

- For #E132, #E134, #E137, #E138 Repair Stands

### E138 Professional Repair Stand

- Rotatable clamping mechanism holds Ø25.4~55mm tubes
- Quick release for easy adjustment
- Fold for better mobility
- 3-leg stands stable and portable
- Contains paper towel holder
- Contains carry bag
- Tool tray (#E132T) and tools are optional



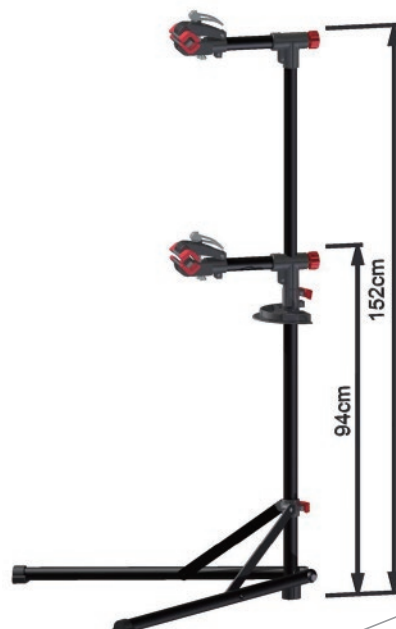
### E614 Rotatable Race Stand

- 360-degree rotatable
- It's quite easy to do bike services and setting or cleaning process
- The crossbar is compatible with all fork and rear dropouts
- Adjustable to match various bikes
- With strap to hold the frame for more safety
- Auto adjustable foot padding to fit uneven floor condition and more stable workstation
- This stand can support 25kgs / 55.12lbs and height 90cm / 3'
- Carry bag included



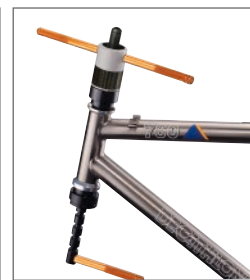
### E621 Franky Repair Stand

- Large foot for a sturdy stand
- Foldable for easier storage or transportation
- This stand can support 20kgs/44lbs and height 90cm/3'





For BB cups



For headset cups

### E147 Headset Cup / BB Cup Press Tool

- For 1", 1-1/8", 1-1/4", and 1-1/2"
- For head tube length up to 260mm
- Patented



### E152

- Pedal tap, 1/2"x20TPI (left + right)

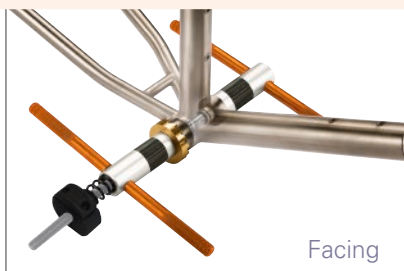
### E154

- Pedal tap, 9/16"x20TPI (left + right)



### E158 Complete Tap Set with Handle & Storage Pouch

- #E166: M3x0.5P, dropout alignment screws
- #E167: M5x0.8P, water bottle, fenders
- #E168: M6x1.0P, anti-brakes and large fender bracket
- #E169: M10x1.0P, derailleur hanger
- #E152: 1/2"x20TPI (left + right), pedal taps
- #E154: 9/16"x20TPI (left + right), pedal taps



Facing



Tapping

### E175 BB Tapping & Facing Tool, English

- For English (1.37" x 24TPI)
- Patented



### E181 Head Tube Reaming & Facing Tool

- For 1" and 1-1/8" conventional headset systems
- #E181A, #E181B, and #E181F are included
- Patented



### E185 BB Tapping & Head Tube Reaming & Facing Set

- For 1" and 1-1/8" conventional headset systems
- Kit includes: #E171F, #E171L, #E171R, #E171T, #E173L, #E173R, #E173T, #E181A, and #E181B
- Patented

Please refer to the next page for other cutters



<b>E173R</b>	Tap	English (1.37" x 24TPI), for right side, Golden
<b>E173L</b>	Tap	English (1.37" x 24TPI), for left side, Black
<b>E173T</b>	Tap	Italian (1.37" x 24TPI), Green
<b>E171N</b>	Bottom Bracket Reaming & Facing Cutter	Ø41mm for BB86/92, PF24, PF41. H.S.S.
<b>E171M</b>	Bottom Bracket Reaming & Facing Cutter	Ø46mm for PF30. H.S.S.
<b>E171R</b>	BB Screw	English (1.37" x 24TPI), for right side, Golden
<b>E171L</b>	BB Screw	English (1.37" x 24TPI), for left side, Black
<b>E171T</b>	BB Screw	Italian (1.37" x 24TPI), Silver
<b>E181L</b>	Centering Cone	For Head Tube inner Ø48~54mm. Usually used in conjunction with E181S
<b>E181F</b>	Head Tube Facer	Up to Ø45mm
<b>E171F</b>	BB & Head Tube Facer	Up to Ø55mm
<b>E181C</b>	Head Tube Reamer	Ø34mm for 1-1/8" conventional headset systems. Chris King®
<b>E181G</b>	Head Tube Reaming & Facing Cutter	Ø41.4mm for Cane Creek®. 1-1/8" ZS compatible low profile headset systems. H.S.S.
<b>E181S</b>	Head Tube Reaming & Facing Cutter	Ø49.6mm for 1-1/2" OnePointFive headset systems. H.S.S.
<b>E181T</b>	Head Tube Reaming & Facing Cutter	For Campagnolo® Hiddenset compatible integrated headset systems, top. H.S.S.
<b>E181P</b>	Head Tube Reaming & Facing Cutter	For Cane Creek®. 1-1/8" IS compatible integrated headset systems, top. H.S.S.
<b>E181U</b>	Head Tube Reaming & Facing Cutter	For Campagnolo® Hiddenset compatible integrated headset systems, bottom. H.S.S.
<b>E181R</b>	Head Tube Reaming & Facing Cutter	For Cane Creek®. 1-1/8" IS compatible integrated headset systems, bottom. H.S.S.
<b>E181V</b>	Head Tube Reaming & Facing Cutter	For FSA® Integrated #44 series headset systems, 1-1/8", top. H.S.S.
<b>E181W</b>	Head Tube Reaming & Facing Cutter	For FSA® Integrated #44 series headset systems, 1-1/4", bottom. H.S.S.



### E244 Crown Race Installation Tool

- For 1", 1-1/8", and 1-1/2" fork steerer tubes



### E253 Crown Race Remover

- Up to 1-1/2"



### E221 Headset Cups Remover

- For 1" and 1-1/8"

### E223 Headset Cups Remover

- For 1-1/4" and 1-1/2"



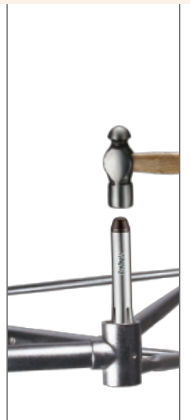
### E293 Press-fit Bearing Removal Tool

- For internal Ø24mm ~ 30mm bottom bracket bearings



### E294 Press-fit Bearing Removal Tool

- For internal Ø35mm ~ 46mm bottom bracket bearings





### E263 Frame & Fork Adjuster

- For expanding & compressing steel forks, chain stays, and seat stays
- Trapezoid thread provides extra power and longer life time
- With protective rubber where tool meets bike

### E263S Spare Rubber Pads for #E263

- Set of 4 pieces



### E272 Shuriken Disc Mount Facing Tool

- It is for erasing the paint on the mounting surface
- Patented

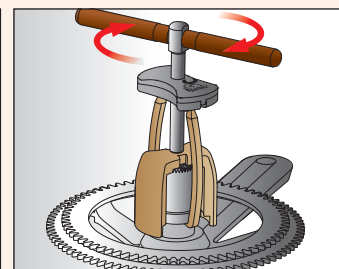
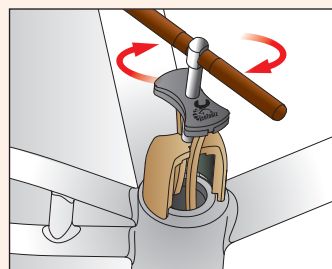


### E291 Bearing Puller

- For BB30, BB86, BB92, and Campagnolo® Ultra-torque
- For bearing cup of outer Ø40mm ~ 45mm
- Patented

### E291S

- Spare Claws for #E291
- Set of 2 pieces



### E295 Bearing Puller Kit

- For the removal of bearings and bushings
- 2-pound slide hammer with T-handle



### E296 Hub Bearing Installation Kit

- Only the outer contacts the bearing jacket when pressing in, effectively protecting the bearing
- 7075 aluminum alloy & CNC machining
- Anode hard oxidation treatment

Model	IDxOD	
6000	10x26	mm
6001	12x28	mm
6900	10x22	mm
6901	12x24	mm
6902	15x28	mm
6903	17x30	mm
608	8x22	mm
R6	3/8x7/8	inch
1526	15x26	mm
1728	17x28	mm
6800	10x19	mm
6801	12x21	mm
6802	15x24	mm
6803	17x26	mm
6804	20x32	mm
6805	25x37	mm
6806	30x42	mm
	24x37	mm
	22x37	mm



**E312 Wheel Centering Gauge**

- For rim size 16" ~ 31"



**E313 Wheel Centering Gauge with Meter**

- For rim size 16" ~ 31"
- Scales to 0.1mm tolerance
- The black tolerance tabs are designed to assign a specific range of acceptable tolerance quickly

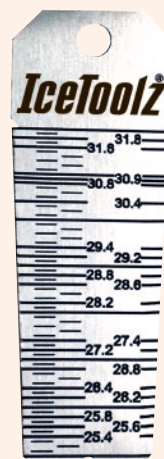
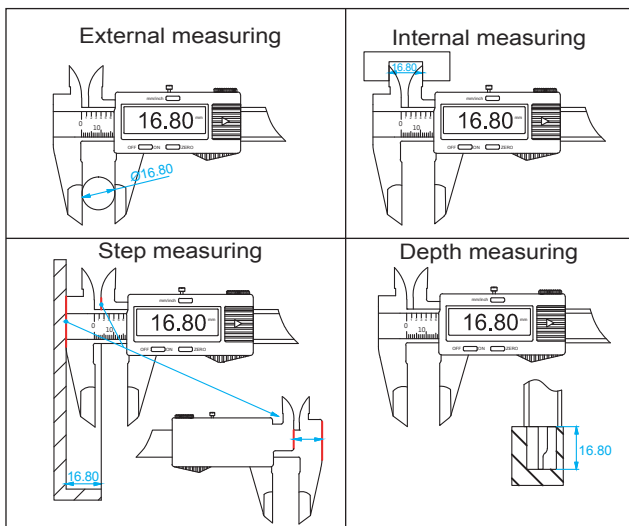


Ø25.4mm~  
Ø31.8mm



**E323 Digital Caliper**

- 0 ~ 150mm
- Scales to 0.01mm



**E326 The Wat Seat Tube Gauge**

- Takes the hassle out of finding the right seat post
- Measures from Ø25.0 ~ Ø31.8mm



**E355 Derailleur Hanger Alignment Tool**

- For rim size 18" ~ 30"





**E381 Spoke Tension Meter**

- For rim size 18" and up
- With Japanese Mitutoyo® analog meter
- Scales to 0.01mm

**E383 Digital Spoke Tension Meter**

- For rim size 18" and up
- With Japanese Mitutoyo® digital meter
- Scales to 0.01mm

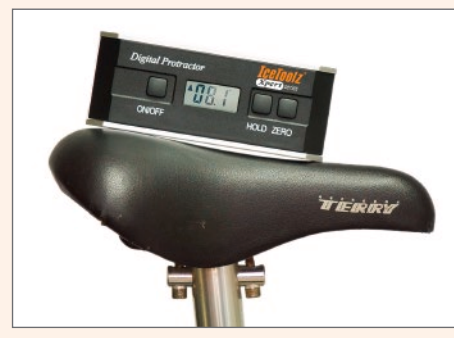


Innovation Award



**E521 Stripped Pedal Threads Repair Kit**

- Ideal for repairing and saving damaged threads high-end cranks
- Includes one set of tap & five helicoil threads in 9/16"x20TPI for right crank arms, as the left crank arms
- With one ergonomic handle to use with tap to enlarge the stripped pedal threads on damaged crank arms
- One handle with comfortable rubber grip to install the helicoils threads onto the crank arms
- One brush for cleaning
- One bottle of #C143 cutting fluid (2oz. / 60ml)
- Patented



**E521H 9/16" Helicoil Threads**

- Set of 5 pairs
- Use with the #E521 Stripped Pedal Threads Repair Kit only



**E521T Thread Tap Set for #E521**

- For use to enlarge the stripped pedal threads on damaged crank arms
- Use with the #E521 Stripped Pedal Threads Repair Kit only
- Patented

**E371 Digital Protractor**

- 0 ° ~ 360 ° fully measured
- Easy to read the LCD display, automatically switch to the direction



<b>0900</b>	Suntour® 2-notch Freewheel Remover	For Suntour® compatible 2-notch freewheel. (#4723)
<b>0903</b>	Suntour® 2-notch Freewheel Remover	For Suntour® compatible 2-notch freewheel. (#53R4) or 21mm spanner
<b>09B3</b>	Freewheel / Cassette Tool	For Shimano® MF compatible freewheels & Campagnolo® cassettes & splined 12-tooth bottom bracket cups found on the square type spindle systems. (#53R4) or 21mm spanner
<b>09C1</b>	Cassette Lockring Tool with Guide Pin	For Shimano® CS, SRAM, SunRace, Chris King compatible cassettes and Shimano® Center Lock disc brakes. (#53R4) or 21mm spanner
<b>09C2</b>	Cassette Lockring Tool with Guide Pin	For Shimano® CS, SRAM, SunRace, Chris King compatible cassettes and Shimano® Center Lock disc brakes. Guide Pin Ø12mm. (#53R4) or 21mm spanner
<b>09C3</b>	Shimano® Cassette Lockring Tool	For Shimano® CS, SRAM, SunRace, Chris King compatible cassettes and Shimano® Center Lock disc brakes. (#53R4) or 21mm spanner
<b>09C5</b>	Freewheel / Cassette Lockring Tool	For Shimano® CS, SRAM, SunRace, Chris King compatible cassettes and Shimano® Center Lock disc brakes. Also for Shimano® MF compatible freewheels & Campagnolo® cassettes (all) and Athena. (#35V8)
<b>09D1</b>	2-notch Freewheel Remover	For 2-notch freewheels. (#4724)
<b>09E1</b>	4-notch Freewheel Remover	For 4-notch freewheels. (#4724)
<b>09F0</b>	Suntour® 4-notch Freewheel Remover	For Suntour® compatible 4-notch freewheel. (#4723)
	Spec.	#53R4 - 1/2" Two-way ratchet wrench #06F2 - 32mm headset wrench (Page 29) #35V8 - 8mm kex key (Page 21) #4724 - 24mm spanner (Page 28)



### 53R4 1/2" Two-way Ratchet Wrench

- With quick release function
- Extra long 370mm / 14.5" handle provides a higher force



### 53A2 Freewheel Turner (Chain Whip, 1/2" x 3/32")

- Compatible for multi-speed
- With chain whip 1/2" x 3/32"



### 53S3 Freewheel Turner (Chain Whip, 1/2" x 3/32")

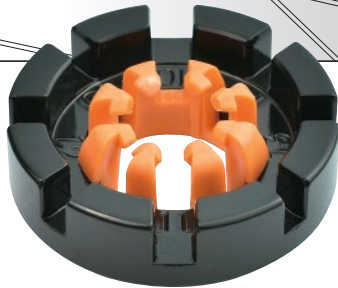
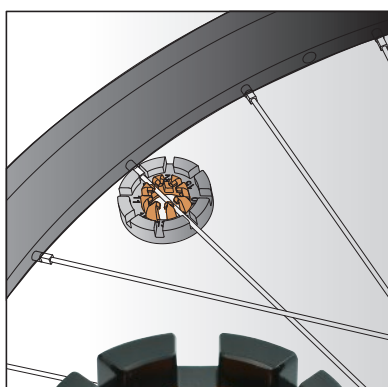
- Compatible for multi-speed
- With chain whip 1/2" x 3/32"
- Ergonomic handle with long anti-slip grip

## Spoke Tools



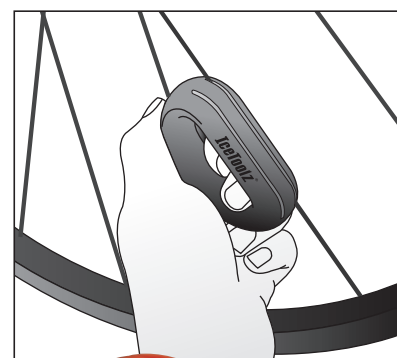
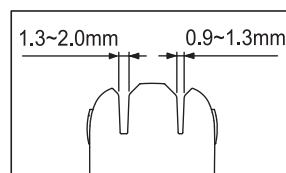
### 1206 6-groove Spoke Wrench

- For 10 ~ 15 gauge nipples



### 12F8 Forged 8-groove Spoke Wrench

- For 10 ~ 15 gauge nipples
- With spokes holder for more efficient wheel building
- Patented

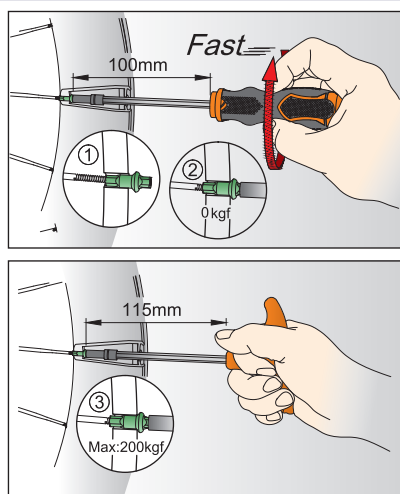
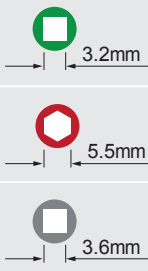


### 12T4 Bladed Spoke Catcher

- For thickness 0.9 ~ 2.0mm
- Patented



<b>08P1</b>	Spoke Tool - Black vinyl coate For 3.20mm/80 ga./0.127" nipples
<b>08P2</b>	Spoke Tool - Green vinyl coated For 3.30mm/80 ga./0.130" nipples
<b>08P3</b>	Spoke Tool - Red vinyl coated For 3.45mm/80 ga./0.136" nipples
<b>08C5</b>	Stainless Steel Spoke Tool - For 3.45mm/80 ga./0.136" nipples
<b>12B3</b>	Spoke Tool - 3.2mm (Square) Nipple
<b>12B7</b>	Spoke Tool - 3.2mm (Square) Nipple
<b>12C3</b>	Spoke Tool - 5.5mm (Hex) Nipple
<b>12C7</b>	Spoke Tool - 5.5mm (Hex) Nipple
<b>12D3</b>	Spoke Tool - 3.6mm (Square) Nipple
<b>12D7</b>	Spoke Tool - 3.6mm (Square) Nipple
<b>12H4</b>	Spoke Tool - For Mavic® wheel systems



**12B5=12B3+12B7**  
**Combo Set of Spoke Tools**  
**For 3.2mm (Square) nipples.**

**12C5=12C3+12C7**  
**Combo Set of Spoke Tools**  
**For 5.5mm (Hex) nipples.**

**12D5=12D3+12D7**  
**Combo Set of Spoke Tools**  
**For 3.6mm (Square) nipples.**

Turn nipples with screwdriver-handle  
**RAPIDLY** in the beginning stage, and  
interchange to T-handle to tighten  
**FIRMLY** at the end.



### 12S4 Nipple Wrench for Deep Rims

- The V-spring grabs the nipple to screw on deep rims to prevent the nipple from dropping
- With depth control function to release the nipple after 3 ~ 4 mm on the spoke
- Also can use with 1/4" electric screwdriver



Set of 2 pieces

### 12S4S

- Spare V-Spring for #12S4, #12S5
- Set of 2 pieces

## Crank Tools

### 04C2 Crank Remover

- With interchangeable adaptor fits both square & hollow axles
- Use with 8mm hex key wrench (#35V8)
- Patented

### 04D2 Crank Extractor

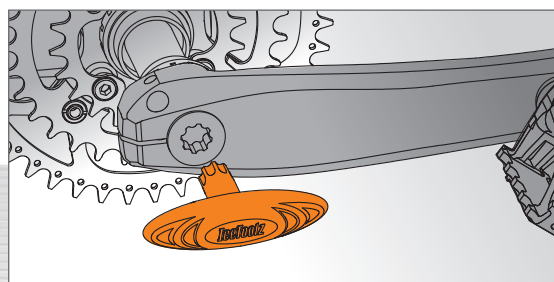
- Contains 14x15mm sockets & 8mm hex key for crank bolt and crank arm removal
- Interchangeable adaptor fits both square & hollow axles
- Patented

### 04S1 Crank Tool with Ergonomic Handle

- Contains 14x15mm sockets & 8mm hex key for crank bolt and crank arm removal
- Interchangeable adaptor fits both square & hollow axles
- Patented

### 04T1 Crank Arm/Cap Installation Tool

- For Shimano® Hollowtech II



04S1

04C2

04D2

04T1





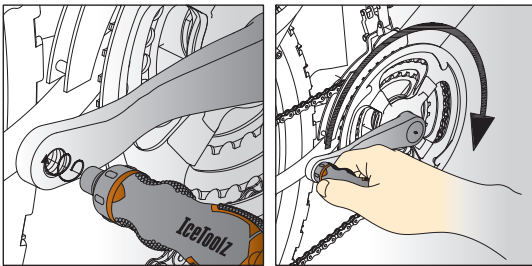
**2741 Chainring Lock Ring Tool**

- For Shimano® FC-M91xx/ FC-M81xx / FC-M71xx series



**27P5 Chainwheel Nut Tool**

- Double-ended design for most slotted-type chainwheel nuts, and crank dust cap
- Securely holds the slotted nut to prevent springing



**33D1 Dummy Pedal**

- Ideal for bike repair and assembly use
- Easy and efficient mount and dismount to rotate the crank

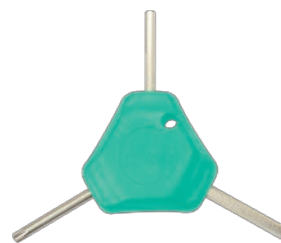
**Hex and Star (Torx®) Wrenches**



**70A1 3x4x5mm Hex Key**



**70B1 4x5x6mm Hex Key**



**70C1 4x5mm Hex Key + T25**



**70TA Hex wrench**

- 4/5/6mm hex key



**70J2 3-Way with a Screwdriver**

- A new twist on the perfect tool
- 4x5mm hex keys and PH2 screwdriver
- Kraton grip



**74A1 6-in-1 Wrench**

- 3x4+5x6mm hex keys
- +/- screwdrivers
- Patented



**70T2 Star Key Wrench**

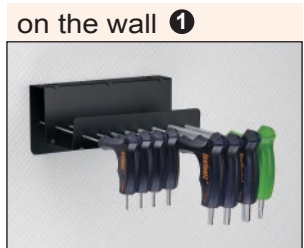
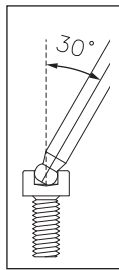
- T25xT30xT40
- Kraton grip



**74B1 Perfect Tool for In-line Skate**

- Bearing pusher
- 4x6mm hex keys
- +/- screwdrivers
- Patented





**7M85 TwinHead Wrench Set**

- 2x2.5x3x4x5x6x8mm hex key wrenches (ball-ended)
- T-25 star wrench
- With ball-ended design which can be used effectively at up a 30 degree angle
- Exceed ANSI and DIN standards
- Set also comes with a stand that can easily be mounted to a bench or wall



**7M20 2mm TwinHead Hex Key Wrench**

- 2mm TwinHead hex key wrench with ball-ended

**7M25 2.5mm TwinHead Hex Key Wrench**

- 2.5mm TwinHead hex key wrench with ball-ended

**7M30 3mm TwinHead Hex Key Wrench**

- 3mm TwinHead hex key wrench with ball-ended

**7M40 4mm TwinHead Hex Key Wrench**

- 4mm TwinHead hex key wrench with ball-ended

**7M50 5mm TwinHead Hex Key Wrench**

- 5mm TwinHead hex key wrench with ball-ended

**7M60 6mm TwinHead Hex Key Wrench**

- 6mm TwinHead hex key wrench with ball-ended

**7M80 8mm TwinHead Hex Key Wrench**

- 8mm TwinHead hex key wrench with ball-ended

**7T20 T-20 TwinHead Star Wrench**

**7T25 T-25 TwinHead Star Wrench**

**7T30 T-30 TwinHead Star Wrench**

**35V8 8mm Hex Key Wrench**

- With gray coating

**35VA 10mm Hex Key Wrench**

- With black coating

**36H1 Quartet Wrench**

- 4x5+6x8mm flex-key wrenches

**36Q1 Hex Key Wrench Set**

- 2x2.5x3x4x5x6x8mm
- 4x5x6mm ball-ended

**A 91A1 Pocket-17**

Hex wrench: 3/ 4/ 5/ 6/ 8mm  
T25, PH1, SL5  
Spanner: 8/ 9/ 10mm  
15mm pedal wrench  
Spoke wrench: 0.127"/ 0.130"/ 0.136"  
Tire lever/ Bottle opener



91.4mm x 47.3mm x 44.5mm

W x H x D



**B**

**91B4 Urban-7**

Hex wrench: 3/ 4/ 5/ 6mm  
T25, PH1, SL5



88mm x 18mm x 45mm



**C**

**91B5 Urban-8**

Hex wrench: 3/ 4/ 5/ 6/ 8mm  
T25, PH1, SL5



88mm x 18mm x 45mm



**D**

**92A1**

Hex wrench: 2/ 2.5/ 3/ 4/ 5/ 6mm  
PH1, SL5



96mm x 19mm x 31mm



**E**

**93B1 Release-20**

Hex wrench: 2/ 2.5/ 3/ 4/ 5/ 6/ 8mm  
PH1, SL5  
Spanner: 8/ 9/ 10/ 11/ 12/ 13/ 14/ 15mm  
15mm pedal wrench  
Spoke wrench: 14G/ 15G  
Tire lever



83mm x 28mm x 31mm



**F**

**94H2 Handy-7**

Hex wrench: 3/ 4/ 5/ 6mm  
T25, PH1, SL5



71mm x 23.4mm x 33.8mm



**G**

**94H4 Handy-8**

Hex wrench: 3/ 4/ 5/ 6/ 8mm  
T25, PH1, SL5



71mm x 23.3mm x 33.7mm



**H**

**95A1 Amaze-5**

Hex wrench: 4/ 5/ 6mm  
PH1, SL5



72.3mm x 23.3mm x 30.7mm



**I**

**95A3 Amaze-10**

Hex wrench:  
1.5/ 2/ 2.5/ 3/ 4/ 5/ 6mm  
T25, PH1, SL5



71.2mm x 21.6mm x 37.2mm



**J**

**95A5 Amaze-11**

Hex wrench:  
1.5/ 2/ 2.5/ 3/ 4/ 5/ 6/ 8mm  
T25, PH1, SL5



71mm x 21.8mm x 37mm



**K**

**95A7 Amaze-19**

Hex wrench:  
1.5/ 2/ 2.5/ 3/ 4/ 5/ 6/ 8mm  
T25, PH1, SL5  
Spanner: 8/ 9/ 10/ 15mm  
Spoke wrench: 14G/ 15G  
Tire lever



73mm x 24.5mm x 37.2mm





L

**96B1 Bar-5**

Hex wrench: 4/ 5/ 6mm  
PH1, SL5



87.5mm x 19.2mm x 32mm



M

**96B3 Bar-11**

Hex wrench:  
1.5/ 2/ 2.5/ 3/ 4/ 5/ 6/ 8mm  
T25, PH1, SL5



88.2mm x 19.5mm x 53mm



N

**96T1 Star-8**

T9/ T10/ T15/ T20/  
T25/ T27/ T30/ T40



87mm x 20.8mm x 38.8mm



O

**96K2 Blade Man**

Hex wrench: 3/ 4/ 5/ 6mm  
PH1, SL5  
Knife/ Bottle opener



83mm x 20mm x 34mm



	A	B	C	D	E	F	G	H	I	J	K	L	M	N	O
	91A1	91B4	91B5	92A1	93B1	94H2	94H4	95A1	95A3	95A5	95A7	96B1	96B3	96T1	96K2
HEX 1.5mm									•	•	•		•		
HEX 2.0mm				•	•				•	•	•		•		
HEX 2.5mm				•	•				•	•	•		•		
HEX 3.0mm	•	•	•	•	•	•	•		•	•	•		•		•
HEX 4.0mm	•	•	•	•	•	•	•	•	•	•	•	•	•		•
HEX 5.0mm	•	•	•	•	•	•	•	•	•	•	•	•	•		•
HEX 6.0mm	•	•	•	•	•	•	•	•	•	•	•	•	•		•
HEX 8.0mm	•	•	•	•	•	•	•	•	•	•	•	•	•		•
PH	•	•	•	•	•	•	•	•	•	•	•	•	•		•
SL	•	•	•	•	•	•	•	•	•	•	•	•	•		•
T9														•	
T10														•	
T15														•	
T20														•	
T25	•	•	•			•	•		•	•	•		•	•	
T27														•	
T30														•	
T40														•	
8mm spanner	•				•						•				
9mm spanner	•				•						•				
10mm spanner	•				•						•				•
11mm spanner					•										
12mm spanner					•										
13mm spanner					•										
14mm spanner					•										
15mm spanner					•						•				
12G spoke wrench															
13G spoke wrench															
14G spoke wrench					•						•				
15G spoke wrench					•						•				
15mm pedal wrench	•														
0.127" spoke wrench	•														
0.130" spoke wrench	•														
0.136" spoke wrench	•														
tire lever	•				•						•				
Chain tool <small>(Shimano® 7-10 sp compatible)</small>															
Bottle opener	•														•
Knife															•
Weight	226g	132g	135g	132g	176g	116g	118g	118g	142g	150g	156g	92g	156g	120g	148g

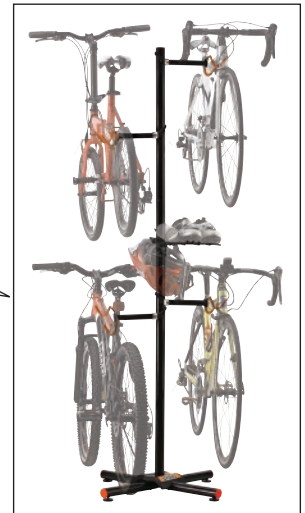
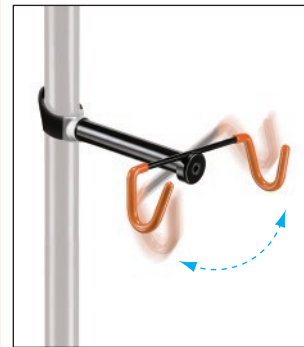


### P413 New Event Stand

- Holds up to 10 bikes by the saddle
- Add the rubber stripe at the top of stand to protect the saddle rail
- With a quick release function, making it easy to assemble or disassemble
- Includes a carry bag and mesh pockets on each side
- Maximum load: 100kg
- Need the extension kit? Please refer to #P411S

### P411S Event and Display Stand Extension Kit

- For #P412 and #P413
- Extends 4~6 bikes. Size: 1,470x810x1,215mm



### P616S Extra Bike Holder

- Maximum Load: 20kg
- For #P616 to hang more than 2 bikes
- Hook angle adjustable to fit different style of frames
- Patented



### P621 Eagle Bicycle Lifter

- Dual pulley system
- Maximum Load: 25kg
- Maximum Height: 3 meters



### P616 Storage Stand

- For 2 bikes
- Maximum Load: 80kg
- Extra bike holders can be added for up to 4 bikes
- With a stable four legged base, and coating on holder to keep your bicycle scratch free
- Patented



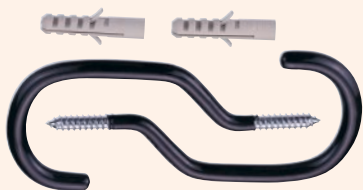
### P678 Hook with Roller

- This is for the fatter tires up to 70mm width



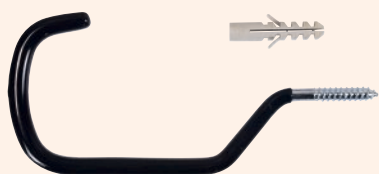
### P679 Hook with Roller

- This is for the fatter tires up to 70mm width



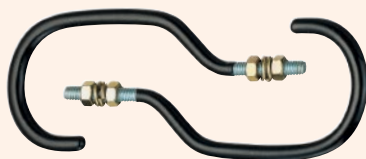
### P684 Storage Hooks - Wood Thread with Dowels

- Set of 2 pieces
- Black vinyl coated
- Maximum Load: 20kg per hook



### P685 Hook with Dowel

- This is for the fatter tires up to 70mm width
- Maximum Load: 20kg per hook



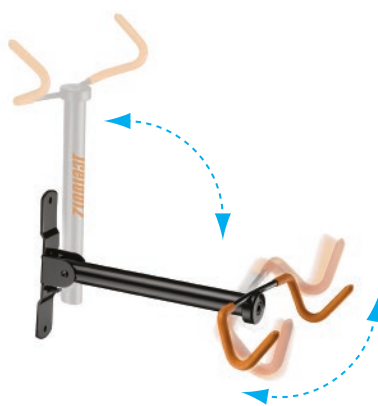
### P686 Storage Hooks - Machine Thread with Nuts and Spring Washers

- Set of 2 pieces
- Black vinyl coated
- Maximum Load: 20kg per hook



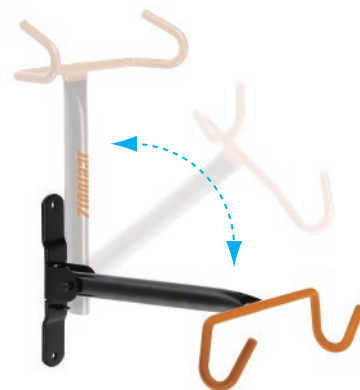
### P688 Hook with Nuts/washers

- This is for the fatter tires up to 70mm width
- Maximum Load: 20kg per hook



### P633 Swing-Bull Storage Rack

- Maximum Load: 20kg
- Foldable for out of way storage
- Hook angle adjustable to fit different style of frames
- Patented



### P631 Bull Storage Rack

- Foldable for out of way storage
- Maximum Load: 20kg



### P643 Stand-By-Me

- Bike Stand for display and repair
- The height and angle of chain stay holder adjustable to fit different size and style of frames
- Maximum Load: 25kg



### P646 Rear Axle Bike Stand

- Up to 29"
- Maximum Load: 25kg
- Patented



### P655 Two-way Storage Hook

- For slat wall or regular wall
- Maximum Load: 20kg
- Patented



62B3



62B7



62M1



61M1



29M2

### 62B3 Pro Shop Chain Tool for Single Speed

- For 1/2"x3/32", 1/2"x1/8" BMX chains, including YBN® "Offset Link" chains
- The thumb-lid isolates the finger from the greasy chain while locates the chain at the right position
- Connecting rivet pilot pin breaker included
- Patented



Offset Link Chain

### 62B7 Pro Shop Chain Tool for Electric Bike Chains

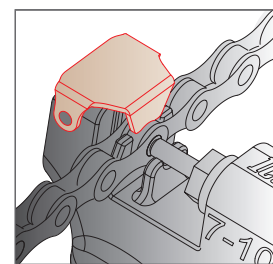
- For 1/2"x3/16" chains
- The thumb-lid isolates the finger from the greasy chain while locates the chain at the right position
- Connecting rivet pilot pin breaker included
- Patented



Connecting Pilot Pin Breaker

### 62M1 Pro Shop Chain Tool for Shimano® Chains

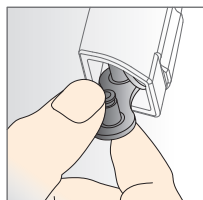
- Perfect for 5, 6, 7, 8, 9, 10, 11 and 12-speed chains
- For Shimano® compatible HG/UG/IG chains
- The thumb-lid isolates the finger from the greasy chain while locates the chain at the right position
- Connecting rivet pilot pin breaker included
- Patented



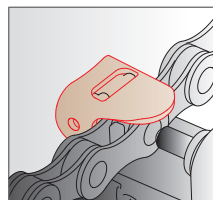
Thumb-lid

### 61M1 Portable Chain Tool

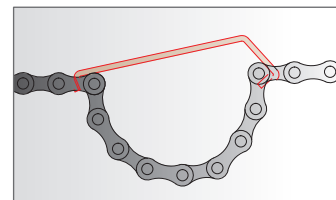
- Perfect for 5, 6, 7, 8, 9, 10, 11 and 12-speed chains
- For Shimano® compatible HG/UG/IG chains
- The thumb-lid isolates the finger from the greasy chain while locates the chain at the right position
- With chain hook to hook the chains when installing the chains
- With chain connectors case
- Flat to put in pocket
- Patented



With Chain Connector Case



Thumb-lid



Chain Hook

### 29M2 Shimano® Compatible Chain Tool

- Perfect for 5, 6, 7, 8, 9, 10, 11 and 12-speed chains
- For Shimano® compatible HG/UG/IG chains



### 61A4S Spare Shaft for #61A4, #61A5, #61M1



**29B2S Spare Shaft for #29B2, #29M1**



**29C2S Spare Shaft for #29C2**



**61A3S Spare Shaft for #61A3, #61UO**

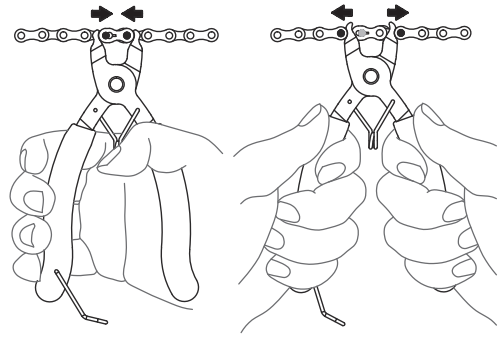


**62P3S Spare Shaft for #62xx series**

- Spare Shaft for #62B3, #62B7, #62M1, #62P3, #62U3

**62D3 Master Link Pliers**

- 2-in-1 tool for Master Link assemble and disassemble



**62H1 Foldable Chain Hook**

- To hook the chains when installing the chains
- Patented



**62C4 Stainless Steel Go / No-go Chain Checker**

- Instantly advises you when it's time to change the chain



62D3



62H1



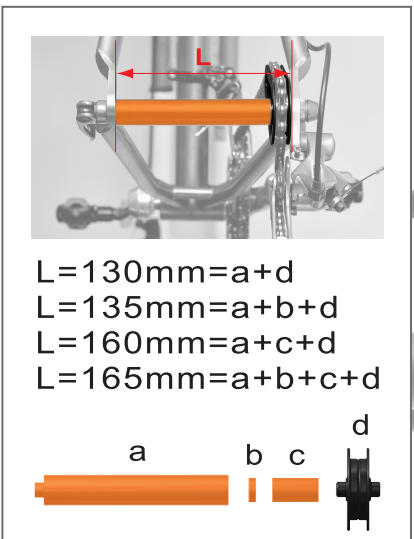
62C4



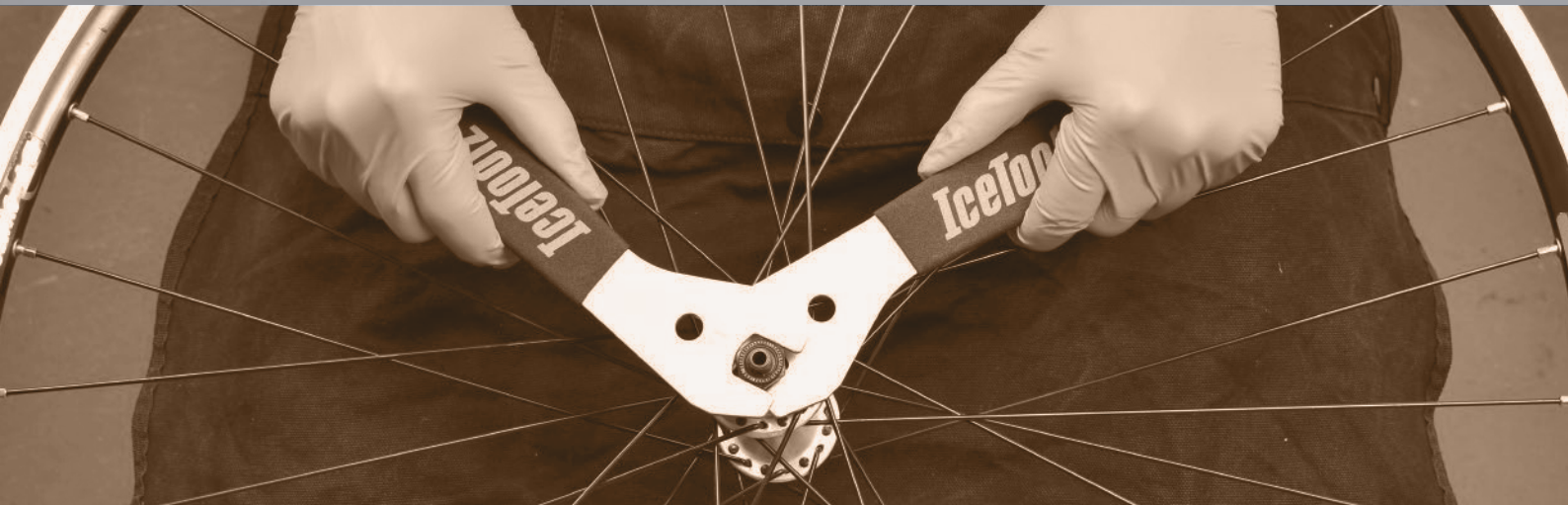
30C1

**30C1 ChainMaster**

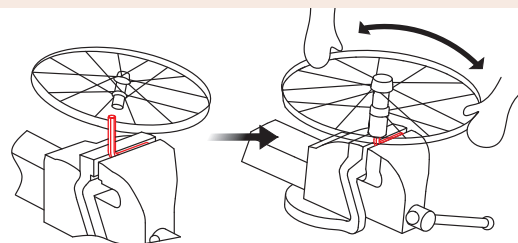
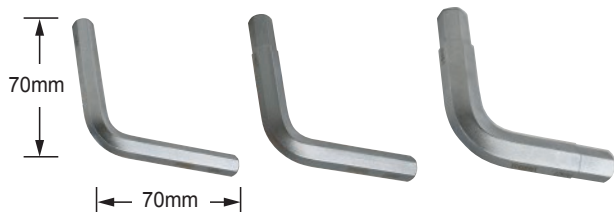
- For rear chain stay, dropout, and derailleur protection when you travel
- Adjustable to fit different length of axles (130, 135, 160, and 165mm)
- Patented



Quick Release is not included



<b>4713~4719</b>	Cone Wrench	4713~4719: 13/14/15/16/17/19mm with 20cm handle
<b>4720~4725</b>	Cone Wrench	4720~4725: 20/21/22/23/24/25mm with 23cm handle
<b>47X3</b>	Cone Wrench Set	13+15+17mm, Set of 3 Pieces (#4713 + #4715 + #4717)
<b>47X7</b>	Cone Wrench Set	13+14+15+16+17+18+19mm, Set of 7 Pieces (#4713 + #4714 + #4715 + #4716 + #4717 + #4718 + #4719)
<b>0502</b>	Cone Wrench Set	13x15+14x16mm, Set of 2 pieces
<b>37A1</b>	Cone Wrench	13x14mm
<b>37B1</b>	Cone Wrench	15x16mm
<b>37C1</b>	Cone Wrench	17x18mm
<b>37X3</b>	Combo Set of Cone Wrenches	37A1+37B1+37C1 (13x14mm + 15x16mm + 17x18mm), Set of 3 pieces
<b>37H1</b>	Hub Body Removal Tool	10x10mm
<b>37H2</b>	Hub Body Removal Tool	11x12mm
<b>37H3</b>	Hub Body Removal Tool	14x15mm

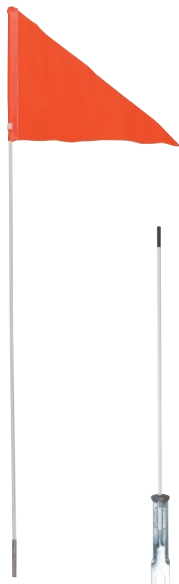


**F164** Safety Flag, one-piece, length 60", white fiberglass pole

**F174** Safety Flag, one-piece, length 72", white fiberglass pole

**F168** Safety Flag, one-piece, length 60", orange fiberglass pole

**F178** Safety Flag, one-piece, length 72", orange fiberglass pole



**F264** Safety Flag, two-pieces, length 60", white fiberglass pole

**F274** Safety Flag, two-pieces, length 72", white fiberglass pole

**F268** Safety Flag, two-pieces, length 60", orange fiberglass pole

**F278** Safety Flag, two-pieces, length 72", orange fiberglass pole

**F368** Safety Flag, three-piece, length 60", orange fiberglass pole

**F374** Safety Flag, three-pieces, length 72", white fiberglass pole



**21C2** ABS Trousers Clips

- With 3M® Scotchlite reflective sheeting

## Headset Wrenches



**06C3** 5-in-1 Headset Wrench

- 30x32x36mm headset wrench
- Freewheel Turner
- Lockring Tool



**06F2** 32mm Headset Wrench



**06H8** 4-in-1 Headset Wrench

- 30x32+36x40mm headset wrench

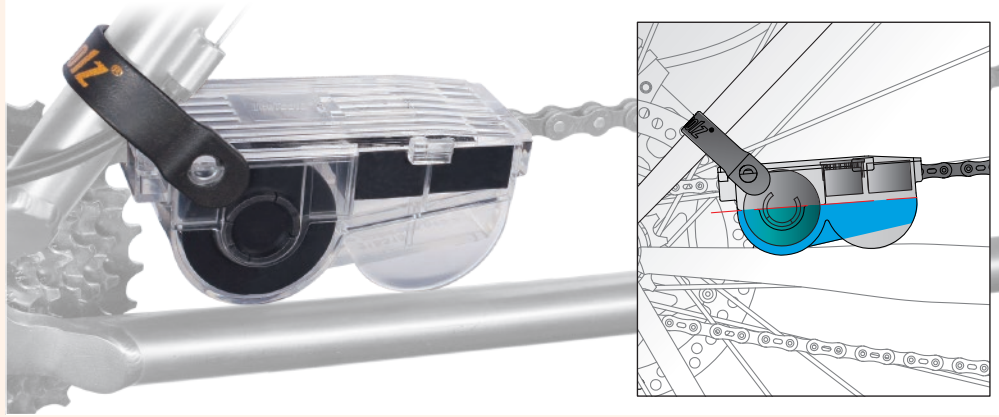


**M100** Headset Lock Nut Installation Tool - 30mm

**M106** Headset Lock Nut Installation Tool - 36mm

**M123** Headset Head Cup Installation Tool - 43mm

**M127** Headset Head Cup Installation Tool - 47mm



### C115 Chain Scrubber

- 20 total brushes with exclusive 4-sided scrubber system clean chain spotlessly
- Rubber band added to allows it to hang on the seat stay by itself, without the need of holding the chain scrubber with your own hand
- This provides more efficiency while cleaning
- Contains one spare sponge
- Patented



### C115S Spare Parts for Chain Scrubber

- For chain scrubber #C113 & #C115
- Contains brushes and two sponges



### C121 Two-way Brush

- With soft bristles for delicate & stiff bristles for aggressive cleaning



### C123 Sprocket Cleaning Brush

- Up to 10-speed
- For cleaning the bike chain, cassette, mechs and chain wheels



### C124 Tire Brush Set

- With stiff bristle for aggressive MTB tires & sprockets cleaning
- Set of 2 pieces



### C125 Cleaning Sponge

- Easy to grip and hold without offering any difficulty or inconvenience
- Highly absorbent
- Perfect for washing cars, mini vans, bikes as well as other household items
- 235 x 110 x 38mm



### C126 Metal Free Rim Brush

- Heavy-duty microfiber cleaning brush compresses for greater flexibility and maneuverability to clean rim safely and effectively
- Cone-shaped head to easily clean hard to reach areas
- 285mmL



### C129 Tube Brush

- Stainless steel bar
- Loop handle
- Ø30mm x 300mmL



### C145 / C146 Anti-slip Paste

- For assembling parts made of carbon fiber and aluminum alloy
- Keeps parts from moving or loosening and ensures perfect corrosion protection
- Prevents the two components seizing up
- #C145: 5ml, #C146: 17oz. / 500ml





C133



C134



### C133 Chain Degreaser

- The environment friendly concentrated degreaser
- With new formula offers a quick and effective way to clean chains and remains new
- Excellent degreasing ability
- Non-corrosive protects your bikes
- It's recommended to use with #C115 Chain Scrubber
- Ratio of bike wash to water 1:3
- 4oz. / 120ml

### C134 Jumbo Chain Degreaser

- Water based degreaser is better for the environment and cleaning your chains.
- New formula offers a quick and effective way to clean chains and remains new
- Excellent degreasing ability
- Non-corrosive protects your bikes and skin
- It's recommended to use with #C115 Chain Scrubber
- Ratio of bike wash to water 1:3
- 15oz. / 400ml

C137



### C137 E-Bike Drivetrain Cleaner

- Quickly eliminate built up oil, grease and grime
- 14oz. / 425ml

C141



### C141 PTFE Lubricant

- Contains PTFE & other additives to keep your chain running smooth
- 4oz. / 120ml



### C143 Cutting Fluid

- For cutting, tapping, facing, and reaming
- Extends the lifespan of the tools
- 2oz. / 60ml



### C147 Chain Lubricant (for e-Bike)

- Engineered specially for e-Bike chains to withstand high temperature and maintains viscosity during usage
- High cooling capacity and electric insulator
- 4oz. / 120ml



### C161 Dry Lubricant

- Well-performed in dust, gravel, and dirt environment
- In dry condition, remains bicycle chains, chain wheels, and derailleur well-functioned in various speed
- It does not stick dust and reduce the wear of parts
- Excellent lubrication can also be maintained at high speeds
- Not recommended for using in wet condition (use #C141 for this application)
- 4oz. / 120ml



### C162 Dry Lubricant with PTFE

- Well-performed in dust, gravel, and dirt environment
- In dry condition, remains bicycle chains, chain wheels, and derailleur well-functioned in various speed
- It does not stick dust and reduce the wear of parts
- Excellent lubrication can also be maintained at high speeds
- Not recommended for using in wet condition (use #C141 for this application)
- 4oz. / 120ml



### C171 / C172 Anti-wear Copper Grease

- Protects metal against corrosion, heat, and water
- Ideally for hubs, screws, nuts, bolts, bearings, and BBs
- Highly lubricating even with small amount
- Temperature range: -25°C ~ 200°C
- #C171: 17oz. / 500ml, #C172: 4oz. / 120ml



### C173 Complex Calcium Sulfonate Grease for Hub

- With high load capacity, resistance against heat, pressure, water and grinding
- Protects against corrosion and oxidation
- Temperature range: -25°C ~ 200°C
- 3ml



### C177 e-Bike Grease

- Ideally for the circuit and parts of motors in various electric bike
- Non-conductive
- Protects metal against corrosion, heat, and water
- Highly lubricating even with small amount
- Temperature range: -25°C ~ 200°C
- 5ml



### C178 Leak-Control Grease Gun

- Ergonomic design for #C172 Copper Grease

### C182



### C183



### C184



### C182 / C183 / C184 Bike Wash

- The environment friendly degreaser offers a quick and effective way to clean bikes
- Excellent degreasing ability
- Non-corrosive protects your bikes
- Concentrated degreaser (#C183 & #C184)
- Ratio of bike wash to water 1:1 (#C183 & #C184)
- #C182: 10oz. / 300ml
- #C183: 2pt. / 1000ml
- #C184: 10.5pt. / 5000ml



### C189 Bike Cleaning Wipes

- Clean you cycle while breaking down grease, oil, dirt and more
- Towel size 26x30cm
- Using environmentally friendly and safe ingredients, and non-pungent and can eliminates odors
- 100 sheets



### C191 Disc Brake Cleaner

- Removing brake dust and oil
- Reduce brake noise
- Restore braking performance
- No any residue
- No CFCs
- 14oz. / 425ml



### C192 Grease Remover

- Bubble-based
- 14oz. / 425ml



### C193 Suspension Cleaner

- Delete the dirt adhered to the inside of stanchion
- Activate the rubber oil seal and to prolong the life of suspension fork
- Keep the dust off while on bike riding, to ensure the protection on the friction point
- 5oz. / 150ml



### C196 Hand Cleaner

- High degreasing
- Antibacterial properties
- Add protective agents and proteins make the product gentle with the hands
- 10.5pt. / 5000ml

## C212 Chain Scrubber and Chain Degreaser Combo Set

### #C115 Chain Scrubber

- 20 total brushes with exclusive 4-sided scrubber system clean chain spotlessly
- Rubber band added to allows it to hang on the seat stay by itself, without the need of holding the chain scrubber with your own hand
- This provides more efficiency while cleaning
- Contains one spare sponge
- Patented

### #C133 Chain Degreaser

- Water based degreaser is better for the environment and cleaning your chains
- New formula offers a quick and effective way to clean chains and remains new
- Excellent degreasing ability
- Non-corrosive protects your bikes and skin
- It's recommended to use with #C115 Chain Scrubber
- Ratio of bike wash to water 1:3
- 4oz. / 120ml



### C311 Bike Polisher

- Helps restoring original shine
- Forms a thin protective layer on your bike
- Non-corrosive, non-toxic, eco-friendly
- Suitable for iron, steel, aluminum, titanium, carbon fiber
- Prewash or foam should be used first to remove dirt and contaminants from the surface
- 14oz. / 425ml



### C312 Frame Protection

- Reduce damage from sunlight or rain
- Suitable for both matt and clear coating
- Please use after washing or waxing
- 10oz. / 300ml



### 33S1 15mm Pedal Wrench

- Off-set design
- Ergonomic handle with long anti-slip grip
- 3/8" square hole for use with torque wrench to prevent demaging the parts

### 34S2 Tool for Single Speed Chain Whip, Pedal, Lockring

- Lockring tool
- Freewheel turner (chain whip, 1/2" x 1/8")
- 15mm pedal wrench
- Perfect tool for fixed-gear bikes

### 34S4 Tool for Multi Speed Chain Whip, Pedal, Lockring

- Lockring tool
- Freewheel turner (chain whip, 1/2" x 3/32")
- 15mm pedal wrench

### 3400 Pedal & Axle Wrench

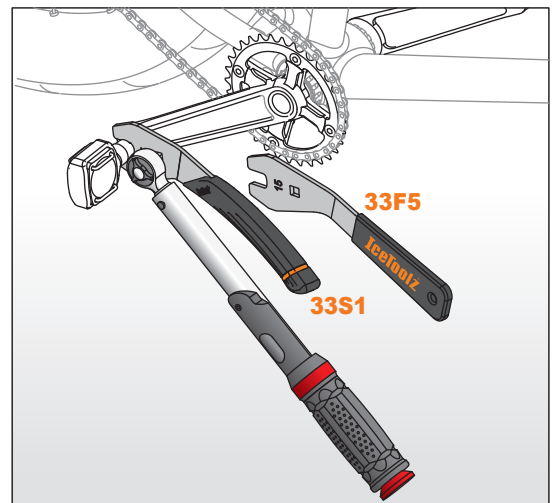
- 15mm pedal wrench
- 14x15mm sockets for crankarm bolts and axle nuts

### 34B1 Pedal & Axle Wrench

- 15mm pedal wrench
- 14mm socket for crankarm bolts and axle nuts

### 33F5 15mm Pedal Wrench

- Help mounting and removing bike's pedals
- For tighten and loosen pedals and has a comfy, ergonomic grip



## Disc Brake Tools



### 55A3 Disc Rotor Truing Tool

- Scales to 2.5mm
- Adjust disc up to 45mm / 1.75"



### 55B3 Disc Brake Caliper Alignment Tool

- Very simple and very easy to align the disc brake
- SUS304 stainless steel



### M082 Shimano® Disc Brake Locking Tool

- Compatible for Shimano® Disc Brake Lockring - Externally serrated type
- Deepness: 34mm, for both QR-type and Nut-type hubs
- Use with 1/2" Torque Wrench (#E211 / #E214)



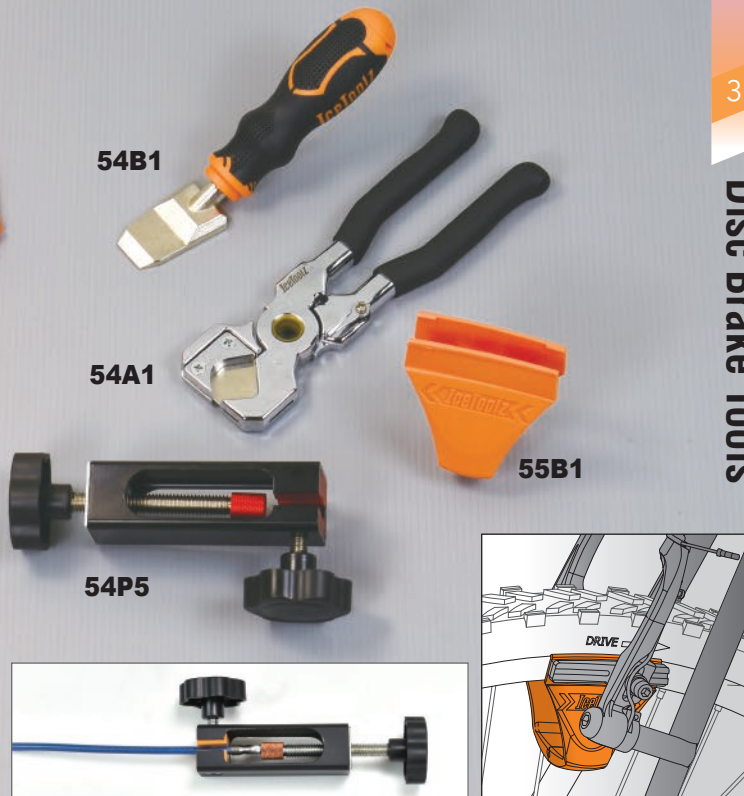
54R3

54B1

54A1

55B1

54P5



### 54R3 Bleed Kit

- Universal design for all hydraulic disc brake systems
- Compatible with AVID®, FORMULA®, HAYES®, HOPE®, MAGURA®, and Shimano®
- Suitable to use with Mineral and DOT oil
- With one pair of NBR Gloves (#17G3)
- New syringes with adaptor to fix on the syringe & PU tubes tightly
- With a releasable cable tie which can fix the PU tubes onto the calipers
- With tubing clips to on/off the flow of syringes

### 54R3H PU Hose with Adapter for #54R3

- ID: ø4mm
- Luer taper



### 54R3S Syringes for #54R3

- 60ml
- Luer taper



### 54B1 Disc Brake Piston and Pad Alignment Tool

- Reposition pistons or help align disc pads
- With ergonomically designed handle for comfortable grip
- Easy to use

### 54A1 Hydraulic Hose Cutter

- Flawlessly cuts hose and prevents inner tube from deforming
- Contains one spare blade #54A1S



54A1S  
Spare Blade for #54A1

### 54P5 Lipstick Needle Driver

- The needle driver is designed for inserting hydraulic needle joints into hose with perfect alignment
- This tool prevents damages when insert the soft brass fittings into a hydrau cable
- It is a handy tool when installing or mending the workings of your bike brakes and hydraulic hoses

### 55B1 Croco Brake Shoe Tuner

- Align rim brake pads easier and faster
- Adjustable to various rim width 15mm ~ 40mm and the rim max depth at 60mm
- Patented

### 54RA Pneumatic Vacuum Brake Bleeder, Quick Coupling C Type & ARO210 Type

### 54RB Pneumatic Vacuum Brake Bleeder, Quick Coupling C Type & ISO 6150 B Type

### 54RC Pneumatic Vacuum Brake Bleeder, Quick Coupling C Type

### 54RE Pneumatic Vacuum Brake Bleeder, Quick Coupling C Type & Euro Type

- Has to be used with #54R3
- Using standard workshop air supply (90-120psi)
- Draws fluid from the bleed nipple enabling either bleeding or full replacement of fluid in system



### 54H1 8x9mm Hose Wrench

- Maintains the disc brake



### 54T1 Brake Fluid Tester

- Test the brake fluid quality quickly to check whether it's qualified





### 11T1 Bottom Bracket Tool Retaining Kit

- Used with all 1/2-inch drive bottom bracket tools excluding non-hollow bottom brackets, this product utilizes a spring-based tension system to apply reliable, adaptable pressure to the tool. This system guarantees complete engagement with the tool fitting and eliminates the risk of slippage.

## B.B. Tools List

Parts Specifications	Parts Number for Reference	SHIMANO® TL	IceToolz	Driver
Campagnolo® splined 12-Tooth Adjustable BB cup pegs/pins tool			09B3 11A0	1/2" Driver
Cartridge / OCTALINK®	BB-5500, 6500 & ES25 BB-UN26	TL-UN74-S	11B1 11B3	1/2" Driver 32mm wrench
8-Notch 44mm O.D. cups		TL-UN96	11D3	32mm wrench
BB and headset lockring tool			11H1	
22/24/30mm I.D. bearings	Press-Fit system		11R3	
3-Notch 46mm O.D. lockring			M083	1/2" Driver
16-Notch 44mm O.D. cups	Shimano® SM-BB4600, BB51, BB52, BB5700, BB-RS500, BB6700, BB70, BB7900 & BB80 Campagnolo®, Chris King® SRAM®/Truvativ® GXP, FSA MegaExo® Hope®, Race Face® X-type, Surly® Wheels Manufacturing™, Fulcrum® Bafang® BBSH, BBS02 mid-drive e-bike motor lockrings.	TL-FC32/33/36	11C1 11F3 M091	8mm hex key 1/2" Driver
16-Notch 41mm O.D. cups	Shimano® Ultegra® BBR60, Deore XT® MT-800	TL-FC25/37	11C3 M093	1/2" Driver
16-Notch 39mm O.D. cups	Shimano® XTR® BB93 Shimano® Dura-Ace® BB9000	TL-FC24/34	11C5 M095	1/2" Driver
12-Notch 46mm O.D. cups	SRAM® DUB™, Race Face® Cinch™ Rotor® BSA30, Zipp® Vuma™ Hawk Racing™ BB3086™		11C7 M097	1/2" Driver
12-Notch 50.4mm O.D. cups	BBInfinite® T47 Chris King® ThreadFit™ T47 & ThreadFit™ 30 Enduro® BBright® TorqTite®, Hambini T47 Rotor® T47 External 30 mm & BBright®, BB30, BB386EVO, and PF30 thread-together		M098	1/2" Driver
16-Notch 52.2mm O.D. cups	FSA® MegaEvo® Wheels Manufacturing™ T47 & PF30		M099	1/2" Driver
12-Notch 48~50mm O.D. cups	Praxis Works® M30		M030	1/2" Driver
16-Notch 53mm O.D. cups	Colnago Threadfit 82.5		M045	1/2" Driver

## 82A8 Ultimate Tool Kit



- #04C2: Crank Remover
- #09C5: Freewheel / Cassette Lockring Tool
- #33S1: 15mm Pedal Wrench
- #35V8: 8mm Hex Key Wrench
- #25H6: 6" Adjustable Forged Wrench
- #28P1: #1 Phillips Screwdriver
- #28S3: 3mm Flat Blade Screwdriver
- #53S3: Freewheel Turner (Chain Whip, 1/2" x 3/32")
- #29M1: Shimano® Compatible Chain Tool (5x6x7x8x9x10x11x12-speed)
- #56E6: Glueless Patch Set AirDam, 6 Pieces
- #97T1: T-9x10x15x20x25x27x30x40 Star Key Wrenches
- #12F8: 10-15G Forged 8-groove Spoke Tool
- #11F3: Shimano® Hollowtech II Compatible BB Tool
- #64P3: Tire Lever Set, Set of 3 Pieces
- #39H4: 9x10mm Open-ended Spanner
- #97Y1: 2x2.5x3x4x5x6mm Hex Key Wrenches
- Product Dimensions: 30.5 x 21 x 6.5cm
- Weight: 2.16kg
- Color: Grey

## 82F4 Essence Tool Kit



- #04C2: Crank Remover
- #64P3: Tire Lever Set, Set of 3 Pieces
- #25H6: 6" Forged Adjustable Wrench
- #39H4: 9x10mm Open-ended Wrench
- #35V8: 8mm Hex Key Wrench
- #29M1: Shimano® Compatible Chain Tool (5x6x7x8x9x10x11x12-speed)
- #D8D4: Connecting Tool (from 8mm changing to 1/2")
- #09C1: Cassette Lockring Tool with Guide Pin
- #36Q1: 2/2.5/3/4/5/6 Hex Key Wrench, 4x5x6mm Ball-end
- #28P1: #1 Phillips Screwdriver
- #28S6: 6mm Flat Blade Screwdriver
- #34S4: Lockring Tool, Freewheel Turner, and 15mm Pedal Wrench
- #11F3: Shimano® Hollowtech II Compatible BB Tool
- #12F8: 10-15G Forged 8-groove Spoke Tool
- #35T25: T-25 Torx Wrench, 20x100mmL
- #11B1: Shimano® / ISIS Drive BB Tool
- Product Dimensions: 30.5 x 21 x 6.5cm
- Weight: 1.8kg
- Color: Black

## 84S2 Starter Tool-Roll



- Keep your cycling accessories organized and accommodate in the Starter Tool-Roll
- The simple, versatile design allows you to stow all sorts of tools
- Durable polyester storage roll
- Simple roll-up design carries essential ride necessities
- Contains:
  - #28S6: 6mm flat blade screwdriver with magnetic tip
  - #28P1: #1 Phillips screwdriver with magnetic tip
  - #29M1: Shimano® compatible chain tool (5x6x7x8x9x10x11x12-speed)
  - #36Q1: 2/2.5/3/4/5/6 hex key wrench, 4x5x6mm ball-ended
  - #65A1: Tire puncture repair kit (18 patches, 3 tire levers, 10ml adhesive, 8cm valve hose, A sandpaper)
  - #C123: Sprocket cleaning brush (up to 10-speed for aggressive cleaning)

## 83A1 Storage Bottle



- Keeps your tools and spares secure and protected, in a safe spot when you need them the most
- PE material bottle case, strong and durable for holding tools
- Bottle shaped case, portable and convenient for outdoor use



Product includes tire lever x3, glue, patch x18

Image contains for reference only

## 85A5 Advanced Mechanic Tool Kit



- Carry Case
- #11B1: Shimano® / ISIS Drive BB Tool
- #09C1: Cassette Lockring Tool with Guide Pin
- #M091: BB Installation Tool for Shimano® Hollowtech II
- #C121: Two-way Brush
- #12F8: 10-15G Forged 8-groove Spoke Tool
- #17M4: Tape Measure, Up to 3M / 10FT
- #04C2: Crank Remover
- #3TA1: Star Key Wrench (T-10x15x20x25x27x30x40x45x50)
- #36Q9: Hex Key Wrench Set w/Ball-ended (1.5x2x2.5x3x4x5x6x8x10mm)
- #67B4: Cable Cutter
- #25H6: 6" Forged Adjustable Wrench
- #47X7: 13x14x15x16x17x18x19mm Cone Wrench Set
- #33F5: 15mm Pedal Wrench
- #62M1: Pro Shop Chain Tool (for 5x6x7x8x9x10x11x12-speed)
- #28P1: #1 Phillips Screwdriver
- #28S6: 6mm Flat Blade Screwdriver

## 801A



- #1100: 15mm wrench & locking tool
- #1206: 10-15G Forged 6-groove Spoke Tool
- #25H6: 6" Adjustable Forged Wrench
- #60A2: 8x9x10 Y box wrench
- #60D2: 12x13x14 Y box wrench
- #64P3: Tire Lever Set, Set of 3 Pieces
- 4x5x6x8 Hex key
- 4x6mm flat blade screwdriver
- #1x#2 Phillips screwdriver

- #64P3: Tire Lever Set, Set of 3 Pieces
- #53A2: Multi-speed Freewheel Turner (Chain Whip, 1/2" x 3/32")
- #53R4: 1/2" Two-way Ratchet Wrench
- Product Dimensions : 37.8 x 16.8 x 14.5cm
- Weight: 5.4kg
- Color: Black

## 85A7 Pro Shop Mechanic Tool Kit



- Carry Case
- #C153: Pro Shop Apron
- #53R4: 1/2" Two-way Ratchet Wrench
- #33S1: 15mm Pedal Wrench
- #53S3: Multi-speed Freewheel Turner (Chain Whip, 1/2" x 3/32")
- #C121: Two-way Brush
- #0502: 13x15x14x16mm Cone Wrench Set, 2 Pieces
- #62M1: Pro Shop Chain Tool (for 5x6x7x8x9x10x11x12-speed)
- #04C2: Crank Remover
- #09C1: Cassette Lockring Tool with Guide Pin
- #12F8: 10-15G Forged 8-groove Spoke Tool
- #56E6: Glueless Patch Set AirDam, 6 Pieces
- #M091: BB Installation Tool for Shimano® Hollowtech II
- #30C1: ChainMaster

- #67B4: Cable Cutter
- #97T1: "Star-8" T-9x10x15x20x25x27x30x40 Star Keys
- #97A3: "Mighty-9" 1.5x2x2.5x3x4x5x6mm Hex Keys, +/- Screwdrivers
- #25H6: 6" Forged Adjustable Wrench
- #35V8: 8mm Hex Key Wrench
- #64P3: POM Tyre Levers, Set of 3 Pieces
- #28P1: #1 Phillips Screwdriver
- #28S6: 6mm Flat Blade Screwdriver
- #27P5: Chainwheel Nut Tool
- Product Dimensions: 37.8 x 16.8 x 14.5cm
- Weight: 4.9kg
- Color: Black



**A251 VeloAgile High Pressure Alu Mini Pump**

**A351 VeloClub High Pressure Alu Mini Floor Pump**

**A451 Sport Steel Floor Pump**

**A451H Rubber Hose**



**A451V Twin-Valve**



▪ For Schrader® / Presta® / Dunlop®



**A551 Comp Steel Floor Pump**



**A652 Extreme High Pressure Floor Pump**



**A753 Shock Pump**



**A951 Airgun**

- Dual Valve Pump Head, Quick Coupling C Type & 1/4" BSP Inner Wire Type
- Pressure gauge

**A95B Airgun**

- Dual Valve Pump Head, Quick Coupling C Type & ISO 6150 B Type
- Pressure gauge

**A952 Airgun**

- Dual Valve Pump Head, Quick Coupling C Type & ID-8mm Hose Barb Type
- Pressure gauge

**A95C Airgun**

- Dual Valve Pump Head, Quick Coupling C Type
- Pressure gauge



**A653 Cannon Air Compressor**

- For Tubeless System
- Up to 160psi
- A new innovative valve that manages Schrader® / Presta® / Dunlop®

**A95A Airgun**

- Dual Valve Pump Head, Quick Coupling C Type & ARO210 Type
- Pressure gauge

**A95E Airgun**

- Dual Valve Pump Head, Quick Coupling C Type & Euro Type
- Pressure gauge

		material	valve lock	Length	air pressure
<b>A251</b>	VeloAgile High Pressure Alu Mini Pump	alu	alu thumblock lever	272mm	120 psi 8.2 bar
<b>A351</b>	VeloClub High Pressure Alu Mini Floor Pump	alu	alu thumblock lever	343mm	140 psi 9.6 bar
<b>A451</b>	Sport Steel Floor Pump	steel	twin-valve with thumblock lever	625mm	160 psi 11.0 bar
<b>A551</b>	Comp Steel Pump	steel	twin-valve with thumblock lever	678mm	160 psi 11.0 bar
<b>A652</b>	Extreme High Pressure Floor Pump	alu	alu thumblock lever	658mm	260 psi 18.0 bar
<b>A653</b>	High Pressure Air Tank for Tubeless System	alu	plastic thumblock lever	605mm	160 psi 11.0 bar
<b>A753</b>	Shock Pump	alu	Non-scratch sealed rubber system	225mm	300 psi 20.0 bar





### A810 AirFill CO2 Inflator & Tubeless Tire Repair Kit

- Aluminium alloy body
- Support Schrader and Presta
- Use with threaded cartridge
- With plug fork tool & 2mm Patch Strip x 5



### A810F AirFill CO2 Inflator & Tubeless Tire Repair Kit

- Aluminium alloy body
- Support Schrader and Presta
- Use with threaded cartridge
- With plug fork tool & 2mm Patch Strip x 5
- Freeze Protector included



### A812F AirFill CO2 Inflator & Tubeless Tire Repair Kit

- Aluminium alloy body
- Support Schrader and Presta
- Use with threaded cartridge
- With plug fork tool & 2mm Patch Strip x 5
- Contains 2 cartridge
- Freeze Protector included



### A830 CO2 Inflator

- Aluminium alloy body
- Support Schrader and Presta
- Use with threaded cartridge



### A830F CO2 Inflator

- Aluminium alloy body
- Support Schrader and Presta
- Use with threaded cartridge
- Freeze Protector included



A911



A91A



A91C



A912



A91B



A91E

- A911** Dual Valve Pump Head, 1/4" BSP Inner Wire Type
- A912** Dual Valve Pump Head, ID-8mm Hose Barb Type
- A91A** Dual Valve Pump Head, Quick Coupling ARO 210 Type
- A91B** Dual Valve Pump Head, Quick Coupling ISO 6150 B Type
- A91C** Dual Valve Pump Head, Quick Coupling C Type
- A91E** Dual Valve Pump Head, Quick Coupling Euro Type

	valve type	weight	capacity		
<b>A251</b>	Presta®/Schrader®	112 gram	56 cm <sup>3</sup>	Road bike	nflating on both ways
<b>A351</b>	Presta®/Schrader®/Dunlop®	260 gram	90 cm <sup>3</sup>	home usage	with gauge
<b>A451</b>	Presta®/Schrader®/Dunlop®	1,100 gram	280 cm <sup>3</sup>	home usage	with gauge (2.5")
<b>A551</b>	Presta®/Schrader®/Dunlop®	1,280 gram	300 cm <sup>3</sup>	both home/store usage	with gauge (2.5")
<b>A652</b>	Presta®/Schrader®/Dunlop®	1,320 gram	300 cm <sup>3</sup>	both home/store usage	with gauge (3")
<b>A653</b>	Presta®/Schrader®/Dunlop®	1,760 gram	880 cm <sup>3</sup>	home usage	with safety valve
<b>A753</b>	Schrader®	179 gram	8 cm <sup>3</sup>	home usage	with gauge



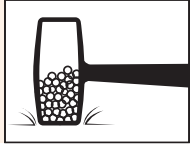
### 17M4 Tape Measure

- Measures up to 3 meters / 10 feet in centimeters & inches



### 17N1 Rubber Mallet

- When a little force is needed
- Coated to prevent marring and marking 2.5lb / 1.13kg



### 28C2 7" Combination Pliers

- 2-tone handle for comfort grip
- Heat treated CR-V for longer lifespan
- Compact 180mm
- Self-opening jaw



### 60A2 8x9x10mm Y Box Wrench

- With comfortable Kraton grip, Red

### 60D2 12x13x14mm Y Box Wrench

- With comfortable Kraton grip, Black



### 28D2 7" Diagonal Cutting Pliers

- 2-tone handle for comfort grip
- Heat treated CR-V for longer lifespan
- Compact 180mm
- Self-opening jaw



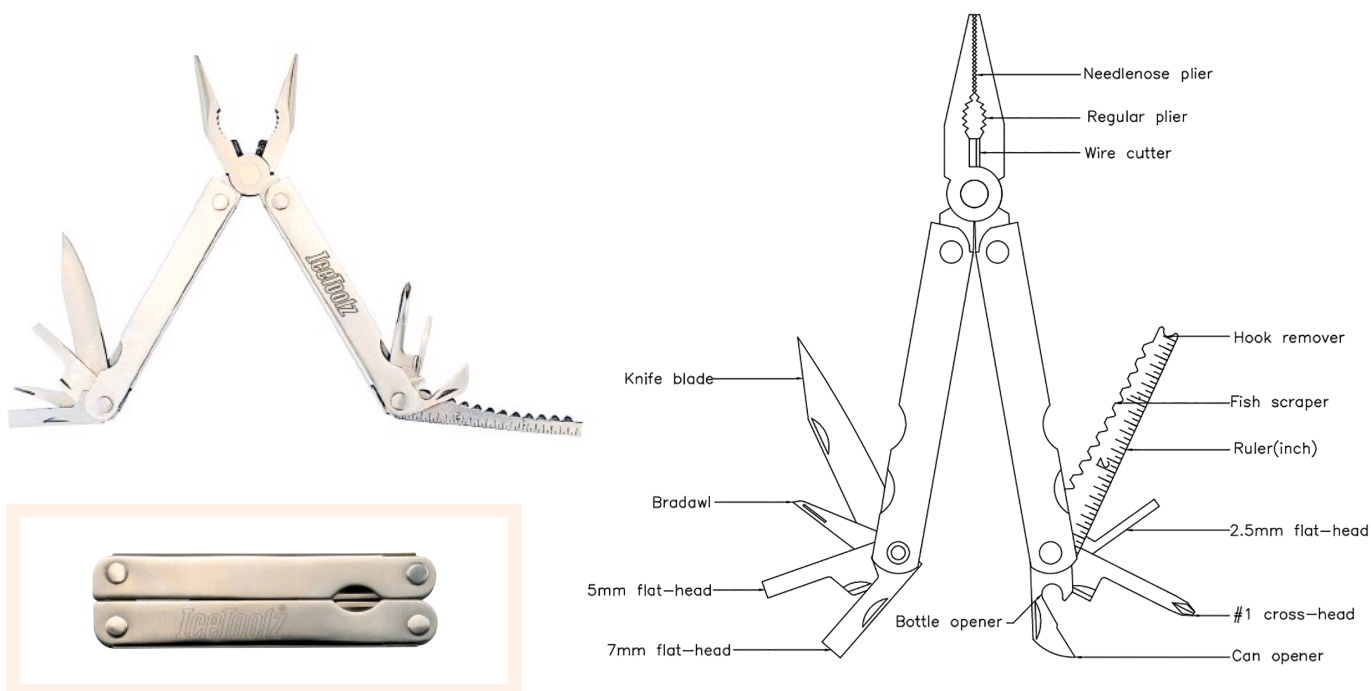
### 28A4 4-Piece Hook and Pick Set

- Remover for O Ring, Oil Seals, and Seal Pullers
- 6-inch length hooks and pick: straight pick, 45 degree hook, 90-degree hook, full hook
- The 3mm metal diameter allows you to work in tight spaces with ease.
- During usage, the internal components remain protected, and the removing process is easily achieved without causing damage
- The knurled anti-slip design located in the center of the metal offers a stable and secure support, increasing the ease of your work



### 28L2 6" Needle Nose Pliers

- 2-tone handle for comfort grip
- Heat treated CR-V for longer lifespan
- Compact 150mm
- Self-opening jaw



### 40B1 LifeGuard 15-Function Multi-Plier

- The foldable multi tool contains plier, needlenose plier, wire cutter, blade knives, three slotted screwdrivers, bradawl, bottle opener, can opener, Phillips screwdriver, fish scaler, hook remover, carpenter's saw and meters
- Stainless Steel



### 28P0 #0 Crosshead (Phillips) Screwdriver with Magnetic Tip

- Ergonomically designed handle for comfortable grip
- 100mm length

### 28P1 #1 Crosshead (Phillips) Screwdriver with Magnetic Tip

- Ergonomically designed handle for comfortable grip
- 100mm length

### 28P2 #2 Crosshead (Phillips) Screwdriver with Magnetic Tip

- Ergonomically designed handle for comfortable grip
- 100mm length



### 28S3 3mm Flat Blade Screwdriver with Magnetic Tip

- Ergonomically designed handle for comfortable grip
- 100mm length

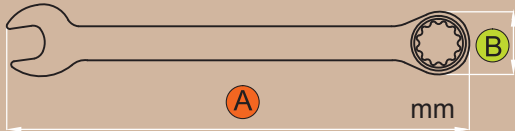
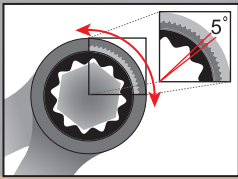
### 28S6 6mm Flat Blade Screwdriver with Magnetic Tip

- Ergonomically designed handle for comfortable grip
- 100mm length



**4108-4115 Combination Ratchet Wrench**

▪ 8mm (#4108) ~ 15mm (#4115), 5-degree ratcheting



	4108	4109	4110	4111	4112	4113	4114	4115
<b>A</b>	135	158	158	165	166	176	189	196
<b>B</b>	17.85	20.8	20.85	23.3	23.65	25.6	27.95	29.05



**3908-3915 Dual Wrench**

- #3908: 8mm
- #3909: 9mm
- #3910: 10mm
- #3911: 11mm
- #3912: 12mm
- #3913: 13mm
- #3914: 14mm
- #3915: 15mm



**25H6 6" Adjustable Forged Wrench**

- With scales to 1mm



**41B8 8~15mm Combination Ratchet Wrench Set**

- With a storage pouch, the pouch includes two holes to hang during use of wrenches
- Contains 8pcs Combination Ratchet Wrenches, 8mm (#4108) ~ 15mm (#4115)



**453R4 1/2" Two-way Ratchet Wrench**

- With quick release function
- Extra long 370mm / 14.5" handle provides a higher force



### 16A5 H.S.S. Blade Tube Cutter

- Ideal for Ti/AL/Cr-Mo/Steel
- Not recommended for carbon fiber or threaded tubes (see #16G1 and #16H3 for these applications)
- Up to 1-5/8" (42mm) tube diameter



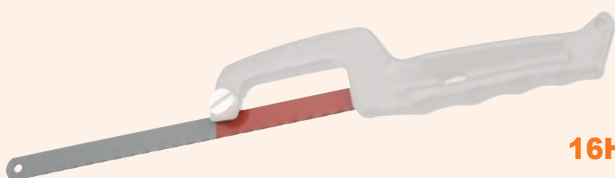
### 16A2S Spare H.S.S. Blade

- For #16A2, #16A4, & #16A5 tube cutters



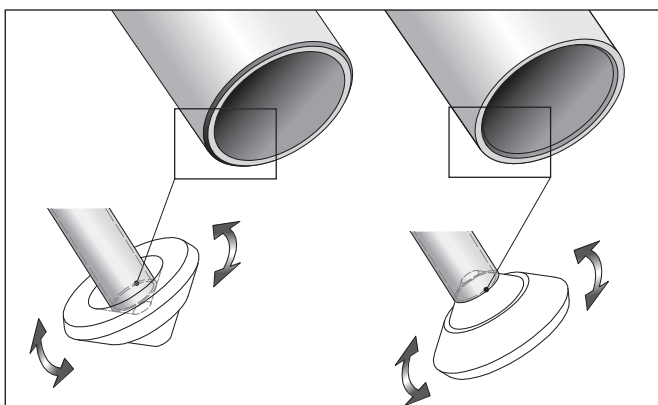
### 16H3 Professional Hack Saw

- Contains carbide grit blade, especially for carbon fiber tubes
- It's also adjustable to 45 degree



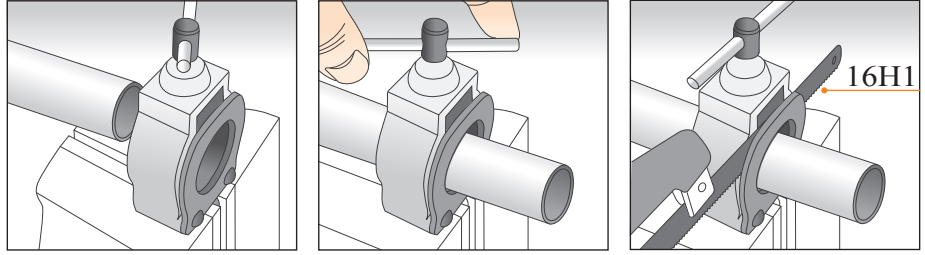
### 16H1S Spare H.S.S. Bi-metal Saw

- For #16H1 mini hack saw



### 16B1 Tube-end Chamfering Tool

- For easy deburring sawed-off tubes
- Suitable for any bicycle tube diameters
- With the tool you can deburr both, inside diameter and outside diameter
- Patented



### 16G1 Saw Guide

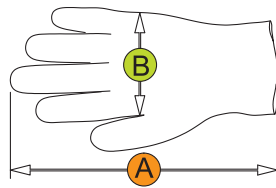
- 90-degree no swing design
- For up to 1-1/4" (32mm) tubes
- Patented

## Accessories



### 17G2-17G4-17G6 NBR Gloves

- Keep your hands clean of oils, acids and dirt while keeping the natural feel. 100 PCS/BOX



Item	17G2	17G4	17G6
Size	M	L	XL
A	23cm	23cm	23cm
B	9.5cm	10.5cm	11.5cm

± 0.5cm

- Powder-Free
- Protein-Free
- High Flexibility
- Textured
- Non Sterile
- Ambidextrous
- Anti-Oil
- Acid Resistant
- Alkali Resistant



### 17D1 Phone Holder

- Suitable for mounting on handlebars with diameter 22 to 38 mm
- Suitable for phones between 6.0~9.0 x 12.0~16.0 cm
- Made of silicone
- High resistance to environmental influences and UV radiation
- Remains flexible at both high and low temperatures
- Tool-free mounting



### C155 Pro Shop Apron

- Double zip center pockets, dual open side pockets, and single zip chest pocket
- Tough enough for a pro shop & comfortable enough for home use

## Andorra

### Race Company

Tel : +33(0)490.04.46.60  
e-mail : contact@raceco-mtb.com  
http://www.raceco-mtb.com

## Australia

### GPI Apollo Bicycles

Tel : +613 9700-9400  
e-mail : sales@apollobikes.com  
http://apollobikes.com

## Austria

### BBF Bike GmbH

Tel : +49(0)3342. 354 325  
e-mail : info@bbf-bike.de  
http://www.bbf-bike.de

## Belgium

### Buzaglo BV

Tel : +31 36.521-0100  
e-mail : info@buzaglo.nl  
http://www.buzaglo.nl

## Brazil

### Isapa Importacao e Comercio Ltda.

Tel : +5511.2823-6500  
e-mail : bike@isapa.com.br  
http://www.isapa.com.br

## Bulgaria

### Velomania LTD

Tel : +359 2 812 7060  
e-mail : info@velomania-bg.com  
http://www.velomania-bg.com

## Canada-1

### Orange Sport Supply, Inc.

Tel : +1 604.990-5110  
e-mail : info@orangesportsupply.com  
http://www.orangesportsupply.com

## Canada-2

### D'Amour Bicycle & Sports Inc.

Tel : +1 514-6376511 / +1 800 363-8743  
e-mail : info@damourbicycle.com  
http://www.damourbicycle.com

## Chile

### Oxford S.A.

Tel : +56.22.2463-2045  
e-mail : enzoe@oxford.cl  
http://www.OxfordStore.cl

## China

### 上海晨瑞商贸有限公司

Tel : +86 21.3358-0260  
e-mail : srchen@live.cn

## Columbia

### HA Bicicletas S.A.

Tel : +57 4.285-5040  
e-mail : servicioalcliente@habicicletas.com  
http://www.habicicletas.com

## Czech

### Profil Bicycles CZ

Tel : +420.7394-73391  
e-mail : profil.bicycles@iol.cz  
http://www.profil-bicycles.cz

## Ecuador

### Importadora Comercial Sucre Cia. Ltd.

Tel : +593 2.247-8625  
e-mail : ics@uio.satnet.net  
http://www.importadorasucre.com

## France

### Race Company

Tel : +33(0)490.04.46.60  
e-mail : contact@raceco-mtb.com  
http://www.raceco-mtb.com

## Germany

### BBF Bike GmbH

Tel : +49(0)3342. 354 325  
e-mail : info@bbf-bike.de  
http://www.bbf-bike.de

## Greece

### Velomania LTD

Tel : +359 2 812 7060  
e-mail : info@velomania-bg.com  
http://www.velomania-bg.com

## Guatemala

### Bicicletas Mercurio S.A. de C.V.

Tel : +52 444-1442-400  
e-mail : contacto@windsorsportsgroup.com  
http://www.windsorsportsgroup.com

## Hungary

### Biker Kft

Tel.: +36 1.278-1021  
e-mail : biker@biker.hu  
http://www.biker.hu

## India

### Extreme Adventure Sports

Tel : +91 20 30500614  
e-mail : raman.jpa@gmail.com  
www.exadsports.com

## Ireland

### Solent (UK) Ltd, T/A Windwave

Tel : +44 23.9252-1912  
e-mail : sales@windwave.co.uk  
http://www.windwave.co.uk

## Italy

### RMS SPA

Tel : +39 0362.27301  
e-mail : massimiliano@rms.it  
http://www.rms.it

## Japan

### Rinei Company Ltd. / リンエイ株式会社

Tel : +81 58-247-3190  
e-mail : info@gifu-rinei.jp  
http://www.rinei-web.jp/

## Korea

### Fours, Inc.

Tel : +82-31-635-6520  
e-mail : jang@fours.co.kr  
http://www.fours.co.kr

## Luxembourg

### Buzaglo BV

Tel : +31 36.521-0100  
e-mail : info@buzaglo.nl  
http://www.buzaglo.nl

## Malaysia

### Guan Chow Sdn Bhd

Tel : +60 5.253-1578  
e-mail : gccycle@gmail.com  
http://www.gccycle.com

## Mexico

### Bicicletas Mercurio S.A. de C.V.

Tel : +52 444-1442-400  
e-mail : contacto@windsorsportsgroup.com  
http://www.windsorsportsgroup.com

## Netherlands

### Buzaglo BV

Tel : +31 36.521-0100  
e-mail : info@buzaglo.nl  
http://www.buzaglo.nl

## New Zealand

### H S White & Son Limited

Tel : +64 6.350-2440  
e-mail : gillian@hswhite.co.nz  
http://www.hswhite.co.nz

## Norway

### Deler AS

Tel : +47 6498-9950  
e-mail : post@deler.no  
http://www.deler.no

## Paraguay

### Cyclesport S.A.

Tel : +595 21.450-512  
e-mail : carlos\_gonzalez@e-cyclesport.com  
http://www.e-cyclesport.com

## Peru

### Oxford S.A.- Sucursal Peru

Tel : +51 21.450-512  
e-mail : dbalarezo@oxfordperu.com  
http://www.oxfordstore.pe

## Philippines

### Champ Bike

Tel : +63 905.370-5648  
e-mail : champ@chambikeph.com  
https://www.facebook.com/chambikeph

## Poland

### Unibike Sp.J.

Tel : +48 52.348-9611~13  
e-mail : unibike@unibike.pl  
http://www.unibike.pl

## Portugal

### Ciclo Coimbrões - Joaquim Leite Comércio de Velocipedes, Lda.

Tel : +351 22.370-9772  
e-mail : geral@ciclocoimbroes.com  
http://www.ciclocoimbroes.com

## Romania

### SC Velomania SRL

Tel : +40 031 805 99 06  
e-mail : sales@dragzone.ro  
http://www.dragzone.ro/

## S. Africa

### Chris Willemse Cycles

Tel : +27 21 914-7528  
e-mail : cwcycles@telkomsa.net  
http://www.cwcycles.co.za

## Singapore

### Guan Chow Sdn Bhd

Tel : +60 5.253-1578  
e-mail : gccycle@gmail.com  
http://www.gccycle.com

## Spain

### Comet S.L.

Tel : +943 331-393  
e-mail : comet@comet.es  
http://www.comet.es

## Switzerland

### Schmid Bike Parts AG

Tel : +41 44.836-6131  
e-mail : info@schmidbikeparts.ch  
http://www.schmidbikeparts.ch

## Taiwan

### 達陸國際股份有限公司

Tel : +886 4.835-3575  
e-mail : dalux.krex@gmail.com  
http://www.krex.com.tw

## Thailand

### Asia International Business & Sales Co., Ltd. / บริษัท เอเชียอินเตอร์เนชั่นแนลบิสสิเนสแอนด์เซลส์ จำกัด

Tel : +66 2887-7813~4  
e-mail : info@asiabike.com  
http://www.asiabike.com

## Turkey

### Kron Bisiklet A.Ş.

Tel : +90 444 27 98  
e-mail : info@kronbisiklet.com.tr  
http://www.kronbisiklet.com.tr

## U.S.A.

### Luckybird LLC

Tel : +1(509)-842-8662  
e-mail : aidan@luckybirdbrands.com  
www.luckybirdbrands.com

## UK

### Solent (UK) Ltd. t/a Windwave

Tel : +44 23.9252-1912  
e-mail : sales@windwave.co.uk  
http://www.windwave.co.uk

## Ukraine

### Veloplaneta Ltd.

Tel : +38 050 402 37 05  
e-mail : veloplaneta@gmail.com  
http://www.veloplaneta.com.ua

## Uruguay

### Juan J. Brogioli e Hijos S.A.

Tel : +598 22 01 01 84  
e-mail : ventas@juanbrogioli.com.uy  
http://www.juanbrogioli.com.uy

## Venezuela

### Importaciones Imremo C.A.

Tel : +58 4141299021  
e-mail : imremoca@gmail.com



[www.icetoolz.com](http://www.icetoolz.com)  
[contact@icetoolz.com](mailto:contact@icetoolz.com)



 **Lifu Bicycle Co., Ltd.**

No. 4, Lane 11, Ziqiang Street, Tucheng District  
New Taipei City 236043, Taiwan  
Tel: +886 2.2268-7367  
Fax: +886 2.2268-1947